

December 2018 - January 2019

Round Table Round-up



On November 1st, planners from twenty-one Rhode Island municipalities gathered to discuss the issues and challenges they are facing during Statewide Planning's third annual Planning Directors' Round Table. Planners were asked to highlight issues in their local communities and then vote on the most critical issue for in-depth discussion. "Affordable housing" took the top spot and generated a lively debate about the difficulties that planners face in reaching the State-mandated ten percent affordable housing goal.

Statewide Planning is going to start convening these round table discussions quarterly, with a different topic and featured speaker at each. The location of the discussion will rotate around the State to allow planners from all communities to have the opportunity to attend. For more information on future round table discussions, or to volunteer your community as a host location, please contact Roberta Groch, Assistant Chief, at Roberta.Groch@doa.ri.gov.

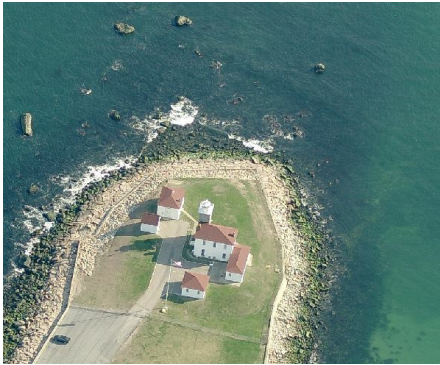
Imagery for Rhode Island

Recently, the Rhode Island Department of Transportation (RIDOT), in collaboration with the Rhode Island Department of Environmental Management (RIDEM), contracted with a consultant for a state-wide orthogonal imagery flight three times a year for the next three years. The sub-3-inch resolution "captures" will occur in spring (leaf-off), summer (leaf-on) and fall (leaf-off) for 2018, 2019 and 2020, with an option to pick up two additional years. Data distribution of each orthophoto flight imagery will be integrated into the online Rhode Island GIS -RIGIS catalog for free public use and shared among all state agencies through the RI State GIS Enterprise system.

At the same time (and in conjunction with the Fall 2018 orthogonal imagery flight) Rhode Island's Department of Public Safety has also contracted with EagleView to capture a full

state-wide oblique imagery capture at three inches this Fall in leaf-off conditions. Pictometry oblique aerial imagery is captured at an angle of 40 to 45 degrees, designed to provide a more natural perspective and make objects easier to recognize and interpret. This imagery will be made available to each municipality in a variety of ways, including external hard drive delivery.

To learn how Pictometry Imagery can help municipalities and agencies assess properties accurately and efficiently plan projects with GIS data and imagery, attend the RIDOT-sponsored [December 19 workshop](#) at Rhode Island College (see "Events," below) or contact Vin Flood, Supervising Planner, at Vincent.Flood@doa.ri.gov.



Long-Range Transportation Plan Update

MOVING FORWARD 2040 RI

The *Long Range Transportation Plan* (LRTP) initiative is an update to *Transportation 2037*, the current LRTP – a key element of the State Guide Plan and an important federal transportation planning requirement. The purpose of the LRTP is to develop a vision for transportation in the state over a twenty-year planning horizon

Since the spring, the LRTP team has been busy completing several components of the plan, including a list of transportation projects, concepts, and ideas that will support LRTP stakeholders (municipalities, State agencies, and others) in achieving their individual goals and objectives.

Revenue projections were also completed for transportation funding through 2040, using the 2018-2027 State Transportation Improvement Program (STIP) as a starting point. The projections report provides an

available over the time-frame of the LRTP. In addition, the LRTP team has been refining the Plan's performance measure list and setting long range targets to achieve the State's overall transportation vision. Consistent with new federal requirements, the LRTP will be performance-based and data-driven. As we move transportation planning forward in Rhode Island and work to develop an e-STIP and project evaluation criteria, the LRTP performance measures (which are closely tied to the plan's adopted goals and objectives) will be used to assess progress toward meeting the objectives laid out in the LRTP.

Please visit PlanRI.com, where you can review work or leave a comment; or

Send an email to: Planning@doa.ri.gov; or

Like us/follow us on social media:

- On Facebook: Rhode Island Moving Forward
- Twitter: @RIMovingForward

For additional information, please contact

understanding of how much anticipated Michael D'Alessandro, Principal Planner, at state and federal funding is expected to be Michael.Dalessandro@doa.ri.gov.

TAC Says 'Goodbye' to Longtime Member

The Transportation Advisory Committee (TAC) celebrated the tenure of its longest-serving member, Everett Stuart, at its November 29 meeting. Mr. Stuart (pictured left, with TAC Chairman Michael Cassidy) has been a member of the TAC for an astonishing twenty-four years! He has been the representative of the RI Rail Passengers Association, and most recently acted as the Committee's Vice-Chairman. Statewide Planning is grateful for his dedicated service to transportation in Rhode Island and wishes him the best of luck.



From the Associate Director

This time of year, as we move toward the shortest days, is full of an odd mixture of joyful moments and remembrances, tasks that need to be completed and family gatherings, traditions and discoveries. Six years ago, on this day, I was preparing to staff the first of the Sakonnet Bridge tolling public forums. Instead, I ended up at my mother's bedside, holding her hand while she passed away.

Life's funny that way: in everything, there is a lesson. Unsurprisingly, no matter how carefully we plan, no matter what we take into consideration, there will always be something we don't expect. Those who are resilient and adaptable will be able to take on these challenges, bending without breaking. Others may need some additional resiliency resources, a helping hand. This is true of our plans, our land use regulations, our infrastructure, and ourselves.

I've made the first of my appointments to get out to the communities and hope to lay out a schedule over the coming week to visit all of our municipal planners in their natural habitat. I will also be assigning staff to touch base with each community on a regular basis, beginning in January. We're looking to add value for our local staff and meet the needs of the communities. We'll be at the League of Cities and Towns annual convention (see below), and we will be setting up our next round table (see above!).

I want to leave you with the thought that has been foremost in my mind lately: kindness matters. Connection matters. Material goods truly don't mean much, in the end. It's the friendships we grow and the relationships we nurture. Tell those you love how much they mean to you and do the things that always get put off until tomorrow. Take care of yourselves (see the doctor, get the test) and each other (a little kindness goes a long way). Put down the cell phone, invite an old friend to lunch, spend a few more minutes with your spouse, your kids, your pets. It all goes by in the blink of an eye, and we are not on this planet in isolation.

Statewide Planning Employee Spotlight

Josh O'Neill, AICP is a Supervising Planner who has been with the Division since January of 2018. Josh's duties include providing staff support to the Transportation Advisory Committee (TAC) and the Freight Advisory Committee, overseeing community freight planning projects, and implementing performance-based planning and programming for the MPO. Prior to joining the Division, Josh worked for the Town of Cumberland, the City of Providence and the Windham (VT) Regional Planning Commission. Josh holds a Bachelor's Degree in American History and a Master's Degree in Public Administration, both earned at the University of New Hampshire. In his free time, he enjoys bringing his two-year-old daughter to the 9th Street Tot Lot in Providence and cycling the East Bay and Blackstone River Bike Paths. Josh is also the current Treasurer of the RI Chapter of the American Planning Association. Contact Josh at Joshua.Oneill@doa.ri.gov.



Upcoming Meetings

Technical Committee

December 7 at 9AM

DOA Conference Room 2A
One Capitol Hill, Providence

PHOTO TRIVIA:

Do you know where in RI this historic structure is located?

See the answer at the bottom of the newsletter.

State Planning Council

December 13 at 9AM

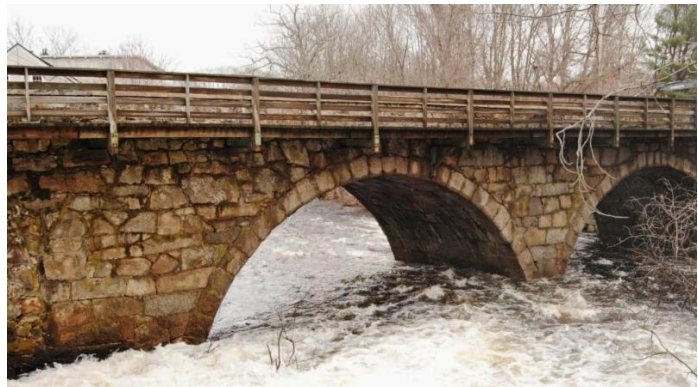
DOA Conference Room 2A
One Capitol Hill, Providence

Transportation Advisory Committee

January 24 at 5:30PM

There is no December TAC meeting

DOA Conference Room 2A
One Capitol Hill, Providence



All meetings are open to the public.

Events

December 5 "[Making Transit-Oriented Development A Reality](#)." Time: 2-3:30PM. This Grow Smart RI workshop will explore the potential for Transit-Oriented Development (TOD) in communities across Rhode Island, as well as current projects fitting this description and efforts coordinated by the State to encourage and support various types of TOD projects. Sponsored by Grow Smart RI and the RI Division of Statewide Planning. Free, but [registration](#) is required. AICP and AIA credits pending. Co-sponsored by the RI

Division of Statewide Planning.

- Location: Warwick Public Library, 600 Sandy Lane (near RIPTA stops, routes 3 & 29).

December 6 ["Increasing Community Resiliency as Planning/Zoning Officials."](#) Time: 5:30-7:30PM. This workshop (presented by Grow Smart RI) will present information about the effect of flooding and sea-level rise on land use and transportation systems to meet the requirements for planning board members to participate in two hours of training concerning the effect of flooding and sea-level rise every two years. Free, but [registration](#) is required. AICP and AIA credits pending. Co-sponsored by the RI Division of Statewide Planning

- Location: East Providence Public Library, 41 Grove Ave.

December 11 & 12 [Congestion Management Process Workshop](#). Time: 9AM-3:30PM. Planners for bicycle, pedestrian and transit should attend this RI Division of Statewide Planning/FHWA workshop to learn about information, background and tools for developing RI's multimodal congestion management process. Free. For more information, please contact Caitlin Greeley, Principal Planner, at Caitlin.Greeley@doa.ri.gov.

- Location: Veterans Memorial Auditorium (6th floor), 1 Avenue of the Arts, Providence.

December 11 & 12 Open house events for the [Transit Master Plan](#). The State's first transit Plan will identify both near and long-term investments to achieve a collective vision for transit in Rhode Island, as well as a strategy for implementation. Project staff will be available at the open houses to answer questions and solicit public input on project goals, gaps in today's network, and opportunities for enhancement. The plan is being undertaken by RIPTA, Statewide Planning, and RIDOT.

- [December 11](#) Time: 11AM-12:30PM. Location: Providence Chamber of Commerce, 30 Exchange Terrace, Providence.
- [December 11](#) Time: 5:30PM -7PM. Location: Museum of Work & Culture, 42 South Main Street, Woonsocket.
- [December 12](#) Time: 5:30PM-7PM. Location Gateway Transportation Center, 23 America's Cup Avenue, Newport.

December 13 [Round table discussion about the RI outdoor recreation network](#) to help to inform the Rhode Island Statewide Comprehensive Outdoor Recreation Plan ("SCORP"). Time: 6:15-7:45PM.

- Location: Jesse M. Smith Memorial Library, 100 Tinkham Lane, Harrisville. Focus topics: Camping, Winter Recreation.

December 19 [Pictometry User Group workshop](#)(see article, above). Time: 12P-3:45PM. Lunch is included. Afterward, join us for "Mappy Hour" at 4PM at Trinity Brewhouse, 186 Fountain Street, Providence. Free, but [registration](#) is required.

- Location: Rhode Island College- Gage Hall Auditorium, 600 Mount Pleasant Ave. Providence.

January 10 [APA-RI Post-Holiday and Awards Party](#) Time: 6-9PM. Tickets are \$35 and can be purchased at www.rhodeislandapa.org. All are welcome. For more information, please contact events@riapa.org.

- Location: Pump House Music Works, 1464 Kingstown Road, South Kingstown.

January 18 [Rhode Island Food System Summit](#) Join government, business, and community partners to discuss the implementation of the Rhode Island Food Strategy and

how we can support the food sector and our state into the future. Schedule: 8AM-2:30PM formal program, lunch provided; 2:30–5PM optional tours of food-related businesses. [Registration](#) required.

- Location: URI Center for Biotechnology and Life Sciences, 120 Flagg Road, Kingston.

January 24 [RI League of Cities and Towns Conference](#) Time: 8:30A-4:30PM. The League's Annual Convention is its showcase event featuring eighteen workshops and seminars for local government officials. Over one hundred private companies, government agencies, and nonprofit corporations showcase their products and services, which are designed exclusively for city and town government.

- Location: Crowne Plaza Hotel, Warwick.

January 25 Deadline for proposals for the [Cranston Street Armory](#) in Providence: the State of RI seeks expressions of interest from businesses and organizations interested in utilizing the historic building. Read the Request For Information (RFI) [here](#). Proposals are due at 11AM. For more information, please contact Jonathan DePault at the RI Division of Capital Asset Management and Maintenance: jonathan.depault@doa.ri.gov or (401) 222-8216.

January 31 "How to Bring Livable and Complete Streets to Your Community." Speaker: Steven Miller- Founder, Livable Streets Alliance. Time: 12P-1P. Join us for lunch and learn about what it takes to bring complete streets to your town. Pizza will be served: 1.0 CM credit pending. Part of the RI Division of Planning Speaker Series, co-sponsored by APA-RI. This is a free event, but registration is requested to Roberta.Groch@doa.ri.gov or 401/222-4720.

- Location: DOA Conference Room 2A, 1 Capitol Hill, Providence

January 31 "Books and Beer" Planning Book Club. Time: 5:30P. Book: "The Divided City: Poverty and Prosperity in Urban America" by Allan Mallach. All are welcome, but please RSVP to Thom Deller at tdeller@centralfallsri.us.

- Location: Whiskey Republic, 15 Bridge Street, Providence

Grant Opportunities

December 31 Deadline for [Home Depot Foundation Community Impact grants](#) The Home Depot Foundation offers grant awards up to \$5,000 to 501c-designated organizations and tax-exempt public service agencies in the U.S. that are using the power of volunteers to improve the community. Grants are given in the form of The Home Depot gift cards for the purchase of tools, materials, or services and are required to be complete within six months of approval date.

December 31 Deadline for [Walmart Foundation Community Grant Program](#) Grants range from \$250 to \$5,000. Organizations applying must be an organization holding a current tax-exempt status under Section 501(c)(3) or (19) organizations; a recognized government entity: state, county, or city agencies, including law enforcement or fire departments, that are requesting funds exclusively for public purposes; and others. See the [grant guidelines](#) for more details.

January 17 Deadline for [Access to Historical Records: Major Initiatives Grant](#) (preliminary). The National Historical Publications and Records Commission seeks

projects that will significantly improve public discovery and use of major historical records collections. The Commission is especially interested in collections of America's early legal records, such as the records of colonial, territorial, county, and early statehood and tribal proceedings that document the evolution of the nation's legal history. All types of historical records are eligible, including documents, photographs, born-digital records, and analog audio and moving images. A grant is for one to three years and awards will be between \$100,000 and \$350,000.

January 18 Deadline for [Cities of Service Engaged Cities Award](#) Is your city engaged in problem-solving, world-changing work with citizens? This is a recognition program, designed to elevate tested solutions that have been shown to successfully address public problems through citizen engagement: this is not an implementation grant program. Prize money can be used at the discretion of the winning cities to support their efforts to engage citizens to solve critical public problems. To be eligible, cities must have 30,000 or more residents.

January 18 Deadline for [Smart Cities Council Readiness Challenge](#) Funding for smart city projects that are cross-cutting, impactful, and inclusive. Winners receive mentoring, an outcome-oriented Readiness workshop, a Readiness road map based on priorities, plus regular progress calls and follow-up workshops. The Challenge is open to all levels of government, regardless of size, including townships, cities, counties, and states. Also eligible are regional authorities (transit, ports, airports) and regional collaborations, such as utility-city and university-city partnerships.

January 31 Deadline for [Sustaining Cultural Heritage Collections](#) planning and implementation grants. The Sustaining Cultural Heritage Collections (SCHC) program helps local and state cultural institutions meet the complex challenge of preserving large and diverse holdings of humanities materials by supporting sustainable conservation measures that mitigate deterioration, prolong the useful life of collections, and support institutional resilience. Maximum award amount for planning: \$40,000; maximum award for implementation: \$350,000.

Planning Articles of Interest

[Coming train station changes the game for Pawtucket and Central Falls](#)

[Are single-use spaces becoming obsolete?](#)

[How state and local agencies are financing infrastructure fixes](#)

[Food insecurity growing in Rhode Island](#)

[Why cities must tackle single-family zoning](#)

[The future of aging just might be in Margaritaille](#)

Check out our website for plans, maps, publications, and more!

www.planning.ri.gov

RI Statewide Planning contacts:

Meredith Brady, Associate Director
(401) 222-6496
Meredith.Brady@doa.ri.gov

Benny Bergantino, Senior Planner
(401) 222-1755
Benny.Bergantino@doa.ri.gov

Linsey Callaghan, Assistant Chief
401/222-6479
Linsey.Callaghan@doa.ri.gov

Paul Capotosto, Fiscal Management Officer
(401) 222-6170
Paul.Capotosto@doa.ri.gov

Michael D'Alessandro, AICP- Principal Planner
(401) 222-2177
Michael.Dalessandro@doa.ri.gov

Christina Delage Baza, Data Analyst I
(401) 222-6481
Christina.DelageBaza@doa.ri.gov

Vincent Flood, Supervising Planner
(401) 222-1243
Vincent.Flood@doa.ri.gov

Kim Gelfuso, Information Services Technician II
(401) 222-5764
Kim.Gelfuso@doa.ri.gov

Caitlin Greeley, Principal Planner
(401) 222-2848
Caitlin.Greeley@doa.ri.gov

Roberta Groch, AICP- Assistant Chief
401/222-4720
Roberta.Groch@doa.ri.gov

Nancy Hess, Supervising Planner
(401) 222-6480
Nancy.hess@doa.ri.gov

Benjamin Jacobs, Principal Research Technician
401-222-3949
Benjamin.Jacobs@doa.ri.gov

Lindsey Langenburg, Principal Planner
(401) 222-4721
Lindsey.Langenburg@doa.ri.gov

Michael Moan, Principal Planner
(401) 222-1236
Michael.Moan@doa.ri.gov

Kevin Nelson, Supervising Planner
(401) 222-2093
Kevin.Nelson@doa.ri.gov

Josh O'Neill, AICP- Supervising Planner
(401) 222-4849
Josh.Oneill@doa.ri.gov

Drew Pflaumer, Principal Planner
(401) 222-7966
Drew.Pflaumer@doa.ri.gov

Catherine Pitassi, Executive Assistant
401-222-7901
Catherine.Pitassi@doa.ri.gov

PHOTO TRIVIA ANSWER:

Stone Arch Bridge (1855)

Slatersville (North Smithfield)

Photo: U.S. Advisory Council on Historic Preservation