

PUBLIC NOTICE: INVITATION OF COMMENTS

Pursuant to *Section 45-22.2-9(c)(2) of the General Laws of Rhode Island*, the Division of Statewide Planning hereby invites comments from the public, regional and state agencies, contiguous municipalities, and other interested parties regarding the local comprehensive plan document listed below.

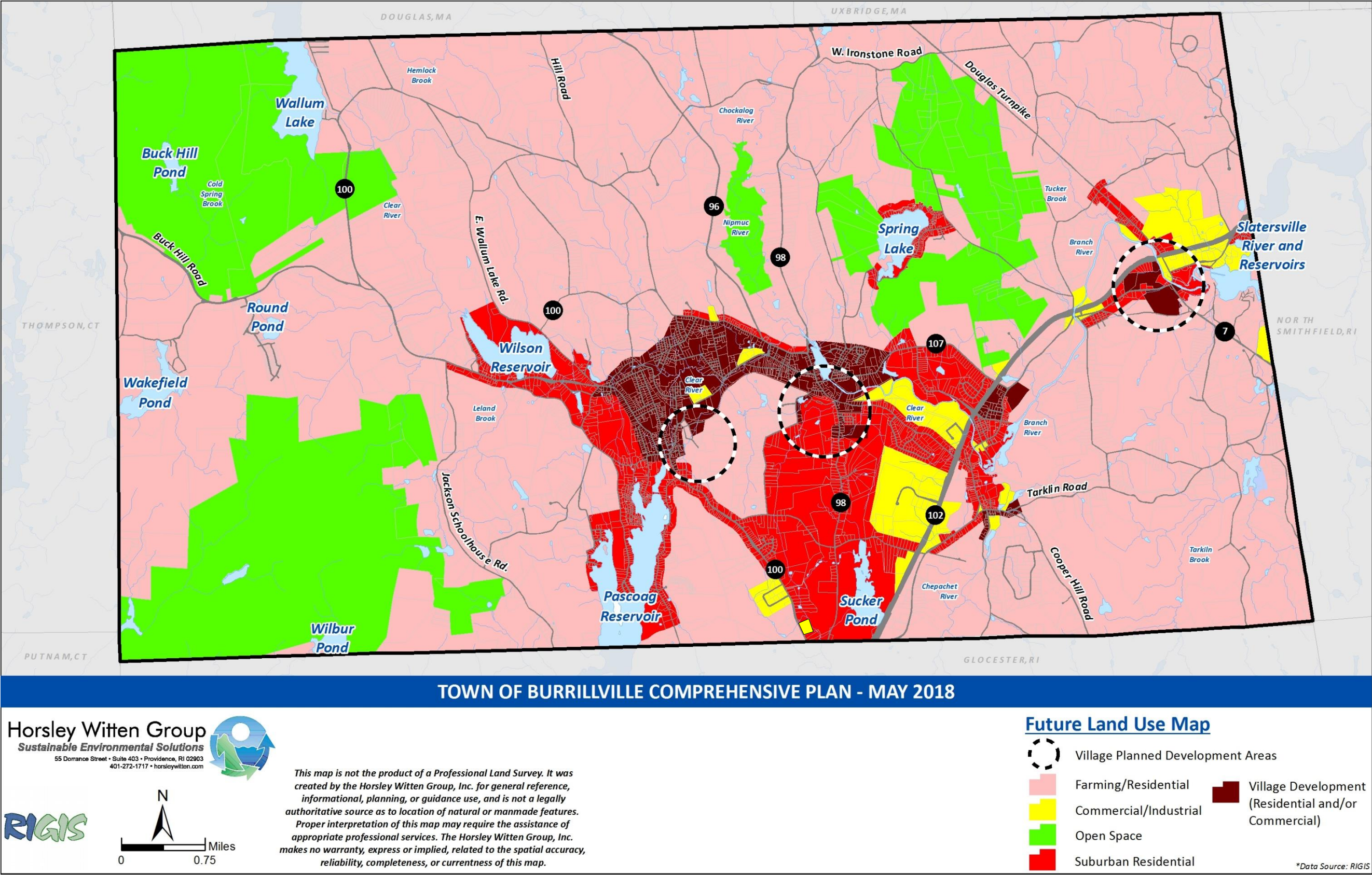
Burrillville – Proposed Comprehensive Plan Amendment to Change the Future Land Use Map to 3 Parcels Located off South Main St. (Route 100). ID#: BUR-A1-22

Posted October 26, 2022

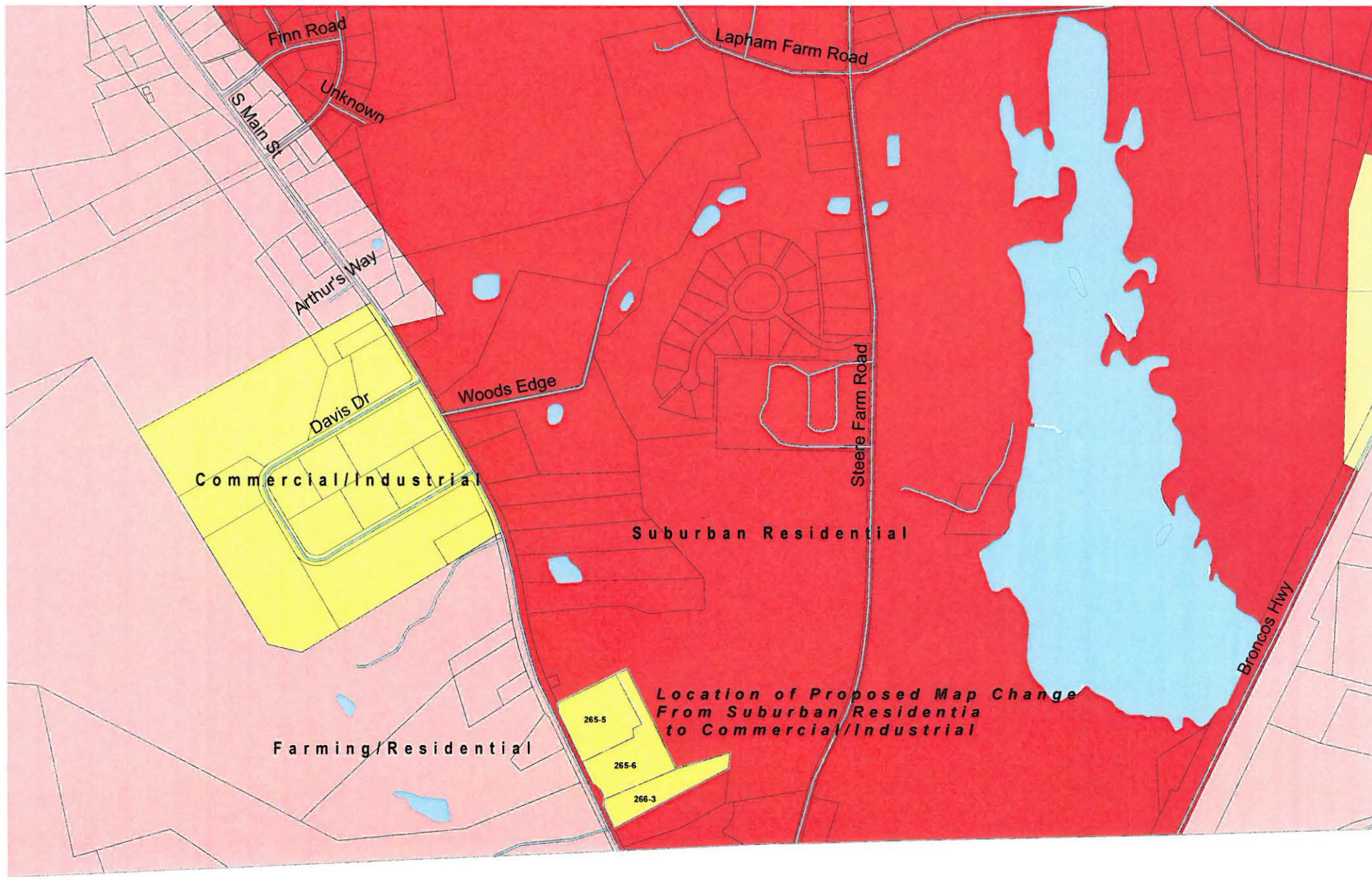
Amend the Comprehensive Plan to change the *Future Land Use Map* designation to three parcels (plat 265, lots 005 and 006 and plat 266, lot 003) located off South Main Street (Route 100) from Suburban/Residential to Commercial/Industrial. The Amendment is currently under review by the State to ensure “consistency with the goals and intent established in the [Comprehensive Planning Act] and in the State Guide Plan.” The comment period shall extend for thirty days from the posted date. All comments should reference the **document title and identifier number**, and should be submitted to:

Benny Bergantino, Principal Planner
Division of Statewide Planning
235 Promenade St., Suite 230
Providence, RI 02908

Voice: (401) 222-1755
Fax: (401) 222-2083
Email: Benny.Bergantino@doa.ri.gov



Map XI-3. Future Land Use Map



0 250 500 1,000 1,500 2,000 Feet



Source: Planning Dept., August 2022

Proposed Comp Plan Change
Future Land Use Map Amendment

**Detail of amendment, adopted by
Town Council on 9/28/2022**