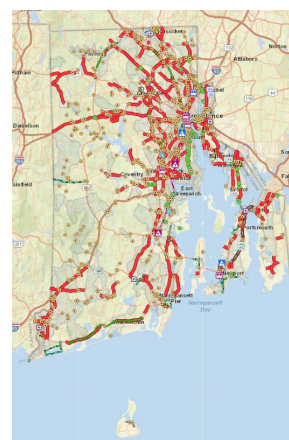




June 2025

## STIP Public Comment Opportunities

The draft Federal Fiscal Year (FFY) 2026-2035 Rhode Island State Transportation Improvement Program (STIP) is currently being prepared in cooperation with the Rhode Island Department of Transportation (RIDOT) and Rhode Island Public Transit Authority (RIPTA). The STIP presents a 10-year program of over \$10 billion allocated for transportation projects from FFY 2026 to 2035, the first four years of which (FFY 2026-2029) are fiscally constrained. It also includes anticipated projects from 2030 to 2035, which are included to give municipalities and the public a better idea of which projects are moving through development into implementation.



The federally required STIP is a list of transportation projects the State of Rhode Island intends to implement using United States Department of Transportation (USDOT) funds. For a transportation project to utilize federal funds it must be included in the STIP. The MPO must adopt a new STIP every four years at a minimum. This STIP rewrite is due for approval before September 30, 2025.

The draft STIP will be ready for public view in the second half of June. Our anticipated 30-day public comment period will start on or around June 20 and end on or around July 22. We also have scheduled two public hearings:

- July 10<sup>th</sup>, 2025 from 5PM-7PM at North Kingstown Free Library Meeting Room (100 Boone Street, North Kingstown, RI) and
- July 16<sup>th</sup>, 2025 from 5PM-7PM at Joseph A. Doorley Building (444 Westminster Street, First Floor Conference Room, Providence, RI)
- Supplemental listening sessions that will be held via Zoom on July 9<sup>th</sup>, 2025 from 12PM – 1PM and 5:30PM – 6:30PM (link to follow).

More information will be available soon, as well as an open link to our SmartComment portal for comment intake. Comments can also be made at our public hearings and during listening sessions. Notice will go out to our 1,400-member contact database with specifics on how to comment on the STIP, with the dates and locations that public hearings will be held. RIDSP will then make any adjustments to the STIP based on feedback and generate a public comment report to be included in the final version and distributed to our Transportation Advisory Committee and State Planning Council in advance of final approval.

For any questions about the STIP, please reach out to Mason Perrone at [Mason.Perrone@doa.ri.gov](mailto:Mason.Perrone@doa.ri.gov) and if you'd like to be added to the contact database, please reach out to Benny Bergantino at [Benny.Bergantino@doa.ri.gov](mailto:Benny.Bergantino@doa.ri.gov).

## Working towards Land Use 2050: An update to *Land Use 2025*

The Rhode Island Division of Statewide Planning (RIDSP) is updating State Guide Plan Element 121, *Land Use 2025: Rhode Island's State Land Use Policies and Plan* for 2050. This initiative involves an update to the state-level geospatial data on municipal zoning, future land use, and building permits across all 39 cities and towns in Rhode Island that will be made publicly available through the Rhode Island Geographic Information System (RIGIS).

The RIDSP has engaged a consultant team led by HR&A Advisors and supported by Go Consulting to assist their staff in data collection and analysis for the Land Use 2050 update. The Team will be working to collect land use, permit, zoning, and growth center data from all RI municipalities and to produce new land use and zoning maps. They will analyze this data to identify changing land use and development patterns over time and help guide future land use planning in Rhode Island in accordance with state needs.

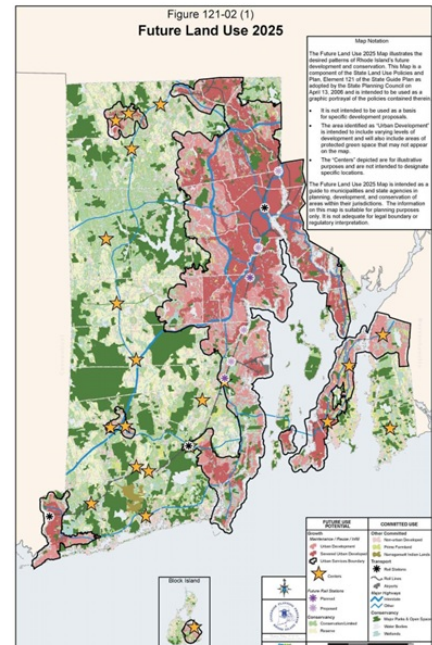
The consultant team will be hosting two virtual office hour meetings for municipal planning staff to share more details on the project and describe the data sharing procedure. Please [sign up here](#) for one of the two sessions:

- **Monday, June 9<sup>th</sup> from 1-2 PM**
- **Monday, June 16<sup>th</sup> from 1-2 PM**

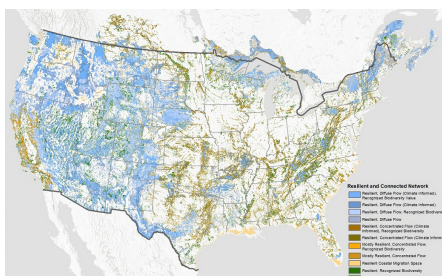
For sharing data that you would like to be included in this update, please upload your files using [this link](#). These may include (but not limited to) ESRI shapefiles or geodatabases containing data on

- (1) municipal future land use,
- (2) municipal building permits
- (3) zoning districts, and
- (4) growth centers.

If you have questions, please reach out to **Nancy Hess (DSP)** at [Nancy.Hess@doa.ri.gov](mailto:Nancy.Hess@doa.ri.gov) or **Rachel Goldsmith (consultant team)** at [rachelgo@mindspring.com](mailto:rachelgo@mindspring.com).



## Planning Tool: Resilient Land Mapper



This tool is designed to help municipalities explore the Resilient and Connected Network created by The Nature Conservancy. By examining this tool, municipalities will be able to identify areas that will be more resilient to climate change effects. The Resilient Mapping Tool offers a way to address climate change, protect ecosystems, and guide land management.

Access the [Resilient Mapping Tool](#)

---

## Planners on the Move

Locations of local planners:

- **Beth Ashman, AICP** is the Planning Director in Cranston;
- **Amanda Aywas** is the Planning Technician in Narragansett;
- **Amelia Lavallee** is the Planning Technician in Warwick; and
- **Jason Pettinato** is the Senior Planner in Pawtucket.

Congratulations, everyone!



---

## Upcoming Statewide Planning Meetings

*All meetings are open to the public.*

### **Moving Forward 2050: RI's Long Range**

#### **Transportation Plan-**

#### **Public Meetings**

**June 2, June 4, & June 10**

Times and locations vary

### **Planners' Roundtable/Technical**

#### **Committee**

**June 6 - 2:30PM**

Barrington Public Library

281 County Rd.- Collier Family Gallery

### **State Planning Council**

**June 12 - 9AM**

1 Capitol Hill (DOA), Room 2A- Providence

### **RIGIS Executive Board**

**June 12- 2PM**

William Hall Library Auditorium

1825 Broad Street, Cranston

### **Water Resources Board**

**June 18 - 9AM**

1 Capitol Hill (DOA), Room 2A

Providence

### **Transportation Advisory Committee**

**June 26 - 5:30PM**

235 Promenade St., Room 300

Providence



## PHOTO TRIVIA

Do you know where in Rhode Island you can find this building?

Find the answer at the bottom of the newsletter!

---

## Municipal Training

Learn about the next Municipal Land Use Training for Rhode Island Local Officials under the "What's New" section of [our homepage](#).

---

# Events

**June 3 [Making the Most of your State's Vulnerable Road User Safety Assessment.](#)** Webinar seeks to demystify the VRUSA for local safe streets advocates and show how advocates in the Midwest analyzed their documents to protect people who walk, roll, and bike. Time: 2PM. Free.

**June 4 [Artificial Intelligence for Sustainability: Maximizing Benefits for the United States](#)** This workshop will examine how AI can be used to maximize benefits for the United States at the intersection of nature, people, and this critical technology. Time: 9AM-4:30PM. Free.

**June 4 [Neighborhood Defenders Lunch & Learn.](#)** Join the APA-RI's EDI Committee for a discussion with the authors of *Neighborhood Defenders: Participatory Politics and America's Housing Crisis*, which chronicles neighborhood participation in housing permitting and how it can limit supply. Location: Online or in-person at the Cranston Public Library, 140 Sockanosset Cross Rd. Fee: Free for APA-RI members, \$5 for others. 1.5 CM.

**June 5 ["Wait, Why Am I Talking??" Active Listening as a Planner's Best Friend.](#)** Interactive webinar explores listening, rather than responding. Participants will learn how bias, institutional culture, and power dynamics can act as barriers to being fully present. Time: 1PM. Free. 1 CM.

**June 6 [Protecting Our Communities: A Whole-Society Approach to Resilience](#)** Explore how communities can strengthen the ties that hold them together before, during, and after climate-related events. Time: 9AM-12PM. Fee: \$15-\$45.

**June 6 [Planners' Roundtable Discussion.](#)** Agenda items include the state's *Long Range Transportation Plan* update, the new RI *Solid Waste Management Plan*, and 2025 RI legislation. Location: Barrington Public Library, 261 County Rd., Collier Family Gallery. Time: 2:30PM-4PM. Free.

**June 9 [Working Towards Land Use 2050: An Update to Land Use 2025.](#)** Virtual office hour meeting for municipal planning staff to learn details about updates to the state-level geospatial data on municipal zoning, future land use, and building permits, and the data sharing procedure. Time: 1PM-2PM. Registration is [here](#).

**June 10 [Stronger Together: Creative Partnerships Between Community Organizations & Local Government for Extreme Weather Preparedness](#)** Hear success stories from across the country where local government and community partners are expanding urban tree canopy, facilitating community engagement, and improving collaboration for preparedness. Time: 1PM. Free.

**June 11 [CNU 33 Local Government Training.](#)** The Congress for New Urbanism (CNU) is offering a full day of programming specifically tailored to the needs of local government. Time: 9AM-5PM. Location: Omni Hotel, Downtown Providence. Fee: \$100.

**June 11-14 [CNU 33 in Providence: Examining the Resilience of a Region.](#)** The 33rd Congress for New Urbanism (CNU) will examine the values of interdependence and community, and establish a hopeful vision for the future. Location: Omni Hotel, Downtown Providence. Registration: \$350-\$900.

**June 12 [Increasing LGBTQ+ Inclusivity & Competency in the Outdoors.](#)** Learn how outdoor programs and recreation organizations can move toward creating environments where LGBTQ+ individuals feel not only welcome, but seen and supported. Time: 1PM. Free.

**June 13 [Advances in Analysis and Visualization for Safe Streets and Roads for All.](#)** Learn methods to support Vision Zero and SS4A initiatives, accessible techniques, and recent developments in safety planning that can apply to your community. Time: 11AM-12:30PM. Fee: \$150. 1.5 CM.



**June 13** [Climate Conversations: Reducing and Removing Methane Emissions](#). Methane removal is being considered as part of the portfolio of strategies to manage methane; hear different removal approaches that are being explored and challenges. Time: 12:30PM. Free.

**June 14** [East Providence Bike Plan Pop Up Event](#). Share your thoughts on proposed recommendations to improve biking and walking and enter for a chance to win a gift card! Time: 10AM-1PM. Location: Borealis Coffee, 250 Bullocks Point Ave., Riverside.

**June 16** [Working Towards Land Use 2050: An Update to Land Use 2025](#). Virtual office hour meeting for municipal planning staff to learn details about updates to the state-level geospatial data on municipal zoning, future land use, and building permits, and the data sharing procedure. Time: 1PM-2PM. Registration is [here](#).

**June 18** [EPA's Flood Cleanup Resources: Promoting Community Resilience through Risk Communication](#). After a flood, affected residents want to assess the condition of their homes and businesses, get rid of debris, and repair damaged property. Learn how to get information to the public after a disaster about how to avoid health and other risks. Time: 3PM. Free.

**June 18** [Micromobility Successes and Challenges: An Overview of Safety, Access, and Enforcement](#). Webinar will discuss injury risk and severity, post-crash care, and an overview of the success of St. Petersburg's micromobility programs. Time: 3P-4PM. Fee: \$0-\$85. 1 CM.

**June 20** [Sustaining Future Historians: The Case for Preserving Ephemeral Geospatial Data](#). This talk provides evidence of the growing temporal gap in geospatial collections and explores the consequences of inaction. Time: 12PM. Free.

**June 26** [Accelerating the Pace of Wetlands Restoration](#). Learn about efforts to increase the pace of restoration and to reduce the cost and complexity of permitting beneficial wetlands projects. Time: 12PM. Free.

**June 26** [2025 Community Paddles Kick-Off](#). This event will feature a guided paddle along the Woonasquatucket River in Providence, live music, locally sourced refreshments, and a community celebration. Time: 4PM. Free.

---

## Grants & Deadlines

**June 26** [Safe Streets and Roads for All \(SS4A\) Grant Program](#) funds regional, local, and Tribal for Implementation Grants and Planning and Demonstration Grants to prevent roadway fatalities and serious injuries.

**June 30** [T-Mobile Hometown Grant Application Q2 2025](#) for projects in rural communities with a population of 50,000 people or less that focus on physical improvements to benefit the public.

---

## Articles of Interest

[Cumberland council not sold on accessory dwellings as a game-changer](#)

[America's college towns go from boom to bust](#)

[RI's lead law enforcement remains complex](#)

[From neighbors to lawmakers, short-term rentals fuel tensions across RI](#)

[PC Institutional Master Plan features expansion of campus boundary](#)

---

## RI Statewide Planning Staff

Click [here](#) for staff contact information.

---

## Photo Trivia Answer

**SCITUATE**

North Scituate Baptist Church (1866)

Photo: Wikipedia

RI Division of Statewide Planning | The Foundry 235 Promenade Street, Suite 230 |  
Providence, RI 02908 US

[Unsubscribe](#) | [Update Profile](#) | [Constant Contact Data Notice](#)



Try email marketing for free today!