

State of Rhode Island
**State Planning Council/
Metropolitan Planning Organization**

Overview and Handbook

Revised March 2026



Department of Administration
Division of Statewide Planning
235 Promenade St, Suite 230
Providence, RI 02908
(401)222-7901

www.planning.ri.gov

Purpose

The Rhode Island Statewide Planning Program, is established by [§42-11-10, *Statewide Planning Program*](#), of the Rhode Island General Laws as the central planning agency for Rhode Island

“to prepare, adopt, and amend a State Guide Plan, including goals and policies and long range or system plans for the physical, economic, and social development of the state and to recommend these to the Governor, the General Assembly, and all others concerned.”

The Statewide Planning Program consists of the State Planning Council, and the Division of Statewide Planning, a division within the Department of Administration. The State Planning Council is comprised of federal, state, local, public representatives, and other advisors, guides the work of the Program. The Division of Statewide Planning is the staff agency of the State Planning Council. The other objectives of the Program are to:

- prepare Guide Plan Elements for the State;
- coordinate activities of the public and private sectors within the framework of the State Guide Plan;
- assist municipal governments with planning, and
- advise the Governor and others on physical, social, and economic planning related topics.

This publication is funded publicly and may not be copyrighted. It may be reprinted, in part or full, with credit acknowledged to the Division of Statewide Planning. For further information contact the Division of Planning, 235 Promenade Street, Suite 230, Providence, RI, 02908, or (401) 222-7901.

TITLE VI – Nondiscrimination Policy & Compliant Process

The Department of Administration, Statewide Division of Planning, gives public notice that it is the policy of the Division to comply with Title VI of the Civil Rights Act of 1964, the Civil Rights Restoration Act of 1987 Executive Order 12898 on Environmental Justice, and related statutes and regulations in all programs and activities. Title VI requires that no person in the United States of America shall, on the grounds of race, color, sex, or national origin be excluded from the participation in, be denied the benefits of, or be otherwise subjected to discrimination under any program or activity for which the Division receives federal financial assistance. Any person who believes he or she has been aggrieved by an unlawful discriminatory practice under Title VI has a right to file a formal complaint with the Division of Statewide Planning. Any such complaint must be in writing and filed with the Statewide Planning Title VI Coordinator within 180 days following the date of the alleged discriminatory occurrence. Title VI Discrimination Complaint Forms may be obtained from the Statewide Division of Planning at no cost to the complainant by calling the Title VI Coordinator at (401) 222-1755 or (401) 222-7901.

Acknowledgements

This guidebook was developed by Paul Gonsalves, Supervising Planner, edited by Isabelle Gillibrand, Principal Planner, with oversight by and Nancy Hess, Interdepartmental Project Manager. Questions can be directed to:

Isabelle Gillibrand
isabelle.gillibrand@doa.ri.gov

Cover Image: Used by permission.
Image available at www.ilostmydog.com

Table of Contents

This digital version of this document is cross-referenced, therefore “clickable”! Click the title of the section you want to view to be brought directly there.

<u>INTRODUCTION</u>	<u>1</u>
STATEWIDE PLANNING PROGRAM.....	1
<u>RHODE ISLAND STATE PLANNING COUNCIL (SPC) AND THE METROPOLITAN PLANNING ORGANIZATION (MPO)</u>	<u>2</u>
STATE PLANNING COUNCIL GENERAL MONTHLY MEETING LOGISTICS	4
TECHNICAL COMMITTEE	5
TRANSPORTATION ADVISORY COMMITTEE.....	6
FREIGHT ADVISORY COMMITTEE	7
RIGIS EXECUTIVE COMMITTEE.....	8
<u>DUTIES AND RESPONSIBILITIES OF THE DIVISION OF STATEWIDE PLANNING.....</u>	<u>9</u>
UNIFIED PLANNING WORK PROGRAM (UPWP)	9
DIVISION OF STATEWIDE PLANNING PARTICIPATION ON COMMITTEES, COMMISSIONS, BOARDS.....	10
APPOINTMENTS SPECIFIED IN R.I. GENERAL LAW	10
APPOINTMENT BY EXECUTIVE ORDERS OR DOA DIRECTOR.....	11
APPOINTMENT BY GOVERNOR	11
PARTICIPATION BY STATE PLANNING COUNCIL OR STATE GUIDE PLAN IMPLEMENTATION	11
PARTICIPATION BY WORK PROGRAM (UPWP) OR OTHER	12
DEPARTMENT OF ADMINISTRATION ORGANIZATION STRUCTURE	14
DIVISION OF STATEWIDE PLANNING ORGANIZATIONAL CHART	15
STAFF CONTACT INFORMATION	16
<u>STATE GUIDE PLAN (SGP).....</u>	<u>17</u>
HOW IS THE STATE GUIDE PLAN USED?	17
PLANS AS STATE POLICY POSITIONS	18
PLANS AS TOOLS TO EVALUATE AND COORDINATE PROJECTS OF STATE IMPORTANCE	18
PLANS AS TOOLS TO ASSURE CONSISTENCY OF LOCAL PLANS.....	18
CURRENT STATE GUIDE PLAN ELEMENTS.....	19
<u>APPENDIX A: RI GENERAL LAWS RELATED TO OTHER LAND USE AND PLANNING.....</u>	<u>21</u>

INTRODUCTION

ABSTRACT

Created by [RI General Law §42-11-10](#), the purposes of the State Planning Council (SPC) are:

- to serve as the sole RI Metropolitan Planning Organization (MPO).
- to provide representation of a broad range of interests and viewpoints in the state planning process,
- to guide the Division of Statewide Planning staff in coordinating planning activities,
- to approve elements of the
-
-
-
- **State Guide Plan (SGP).**
- to determine the consistency of certain development activities of State agencies, local government, and the private sector with the State Guide Plan, and
- to advise the Governor and others on physical, social and economic planning related topics.



Statewide Planning Program

The Department of Administration, Division of Statewide Planning and the State Planning Council, comprise the Statewide Planning Program. The Program consists of the Council, its advisory committees and the staff within the Division (see **Division of Statewide Planning Organizational Chart**).

Rhode Island State Planning Council (SPC) and the Metropolitan Planning Organization (MPO)

<u>WHAT THE SPC DOES</u>	<u>WHAT THE SPC <i>DOES NOT</i> DO</u>
<ol style="list-style-type: none">1. Identify short + long-term transportation / land use needs for the state2. Inform the public about planning activities3. Direct staff to conduct planning studies	<ol style="list-style-type: none">1. Road / Bridge designs, construction or repair2. Enforce traffic laws3. Transit operations4. Zoning or Land Development Regulation

The Council oversees the Division of Statewide Planning’s work as part of the Statewide Planning Program. The State Planning Council (SPC) adopts goals and policies related to planning, most of which are contained within individual plans, which are elements of the State Guide Plan. **The Council has been designated as the single Metropolitan Planning Organization (MPO) for transportation planning purposes in Rhode Island.** The Director of Administration chairs the Council, and the Associate Director for Planning serves as Secretary. The Council adopts the Transportation Improvement Program, a four-year program of transportation investments. The Council also advises the Governor on strategic planning matters.

The MPO was established to ensure that existing and future transportation planning projects and programs are based on a continuing, cooperative planning process. Federal legislation and rules outline certain functions that an MPO must perform. This federal framework creates the baseline of required activities that:

1. Establish a fair and impartial setting for rational decision-making.
2. Identify and evaluate alternative transportation improvements.
3. Prepare and maintain a long-range transportation plan with a 20-year planning horizon,
4. Program transportation funds through a State Transportation Improvement Program (TIP) to receive Federal funding.

5. Prepare a Unified Planning Work Program, in conjunction with the Rhode Island Department of Transportation and the Rhode Island Public Transit Authority, detailing activities and funding for transportation-related planning projects, and
6. Provide a forum for public input to the transportation planning process.

There are 27 members of the [State Planning Council](#), designated by [RI General Law §42-11-10](#), representing a range of interests.

The Law also establishes several advisory committees including:

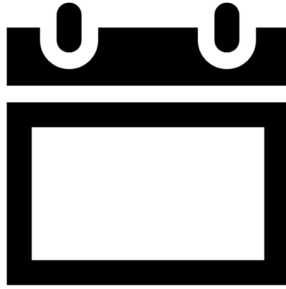
- **Technical Committee**
- **Transportation Advisory Committee**
- **Freight Advisory Committee**
- **RIGIS Executive Committee**
- **[Advisory Committee for Education \(ACE\)](#)** established by [RI General Law §45-70-3](#) requires the Council to appoint an.

The Council and its standing committees follow adopted [Rules and Standards of the State Planning Council](#). Other specialized ad-hoc committees may be created for specific projects.

Staff contacts for the Council are:

- Meredith Brady, Secretary, Rhode Island Division of Statewide Planning, Associate Director, meredith.brady@doa.ri.gov
- Nancy Hess, Interdepartmental Project Manager, nancy.hess@doa.ri.gov
- Lori Cassin, Chief Implementation Aide, lori.cassin@doa.ri.gov

State Planning Council General Monthly Meeting Logistics



Meetings of the State Planning Council (SPC) are held monthly on the second Thursday of the month: these may vary slightly due to holidays.

Special meetings may be called as needed. The dates for the meetings are set in December for the next year.

The locations of the meetings are at the Powers Building (One Capitol Hill in Providence) and are held in the Cornelison Conference Room, Conference Room 2A, unless otherwise posted.



Meeting materials are sent by email to the appointed members and their designees during the prior week, seven (7) days in advance of a meeting. The Chief Implementation Aide forwards agendas and meeting materials and verifies attendance for the meeting to ensure a quorum.

The [Rhode Island Open Meetings Act \(RI General Law §42-46\)](#) requires that **a quorum must be present in person in order to conduct a meeting**. If a Council member is unable to attend, a designee should attend in their place. Please let the [Chief Implementation Aide](#) know who will be attending the meeting as soon as possible.

All meetings are open to the public. Agendas and meeting minutes are filed with the [RI Secretary of State](#) no sooner than 48 hours in advance. Meetings are conducted in a fair and democratic manner using [Robert's Rules of Order](#).

Technical Committee

RI General Law §42-11-10 establishes an advisory committee to the SPC known as the Technical Committee. **The Technical Committee assists with the work of the Division of Statewide Planning staff on State Guide Plans and provides advice on other projects when requested by the Council.**

Membership of the Technical Committee parallels that of the State Planning Council, with representatives of state agencies, local governments, citizens from different areas of the state, and federal advisory members with specialized interest in specific planning areas. The Committee is intended to ensure representation of diverse interests and views. Where some committee members are staff of state agencies also represented on the SPC, these members are expected to advise the appropriate Council members of activities, discussions and upcoming votes of the Committee.

The Committee holds regular quarterly meetings on the first Friday of the month. The Committee reviews studies, plans, and programs that are submitted to the Council reflect public input, are technically sufficient, accurate, and comprehensive. The dates for the meetings are set in December for the next year.

All meetings are open to the public. Meeting minutes and agendas are filed with the RI Secretary of State and meetings are conducted in a fair and democratic manner also using Robert's Rules of Order.

Visit the Technical Committee webpage for more information.

Staff contact is:

- Roberta Groch, Assistant Chief, roberta.groch@doa.ri.gov



Transportation Advisory Committee

The Transportation Advisory Committee (TAC) advises the SPC on transportation planning and provides a citizen's view on transportation decision-making. Members are selected to represent a cross-section of the State in terms of geography, population, cultural values, and transportation needs. The TAC reviews and provides input into the transportation planning documents that are the responsibility of the SPC, acting in its role as the MPO, notably the State Guide Plan for long-range ground transportation including bicycle, freight, transit, and water borne transportation and the [State Transportation Improvement Program \(STIP\)](#).

The Council appoints the TAC according to [RI General Law §42-11-10-f \(iii\)](#) . The process meets requirements of federal law and is subject to continuing review by US Federal Highway and Transit Administrations. The [membership](#) includes ordinary transportation users in transportation decision-making and includes local officials, state agencies, organizations representing a variety of transportation interests, residents from different areas of the State, and the Narragansett Indian Tribe.

The dates for the meetings are set in December for the next year. Meetings are open to the public. Meeting minutes and agendas are filed with the [RI Secretary of State](#).

Visit [the Transportation Advisory Committee \(TAC\) webpage](#) for more information.

Staff contact is:

- Mason Perrone, Assistant Chief, mason.perrone@doa.ri.gov



A bike rider on the South County Bike Path

Freight Advisory Committee

The Freight Advisory Committee focuses on freight and goods movement priorities, issues, projects, and funding needs that utilize Rhode Island's roadways, rail facilities, airports, marine ports, and pipelines. The Committee provides a forum for regional freight stakeholders to discuss strategies to aid in the efficient movement of freight and increase the collaboration between the public and private sector. This committee assists in the implementation of the [State of Rhode Island Freight and Good Movement Plan 2022](#) as well as advises on evolving issues touching freight transportation planning such as goods and materials costs, fuel costs, regulatory constraints and incentives, and industry trends.

Visit the [Freight Advisory Committee webpage](#) for more information.

Staff contact is:

- Asher Eskind, Principal Planner, asher.eskind@doa.ri.gov.



UPS Cargo Plane at TF Green Airport

RIGIS Executive Committee

The State Planning Council (SPC), under RI General Law [§ 42-11-10-f\(6\)](#), is responsible for appointing members to an executive committee with for the advising on the development and coordination of the [Rhode Island Geographic Information System \(RIGIS\)](#). **GIS is a means for enhancing decision-making through the utilization of land-related information. The committee serves to promote the use of geographic information system technology and provides coordination among organizations in Rhode Island using such technology and provides information and assistance to GIS users.** The Committee is advisory to the Division, who is responsible under State law to manage and administer the RIGIS.

RIGIS distributes public geographically referenced datasets that represent a wide range of topics, including transportation, infrastructure, and the environment. The Division oversees and coordinates the management of the data through a contract with the University of Rhode Island (URI) Environmental Data Center who maintains the required technology: hardware and software to run the system.

Quarterly meetings are held by the Committee. The dates for the meetings are set in December for the next year. Meetings are open to the public. Meeting minutes and agendas are filed with the [RI Secretary of State](#).

Visit the [RIGIS Executive Committee webpage](#) for more information.

Staff contacts are:

- Garth Hoxsie-Quinn, Supervising GIS Specialist, garth.hoxsiequinn@doa.ri.gov
- Vincent Flood, Data Analyst II, vincent.flood@doa.ri.gov

The logo for RIGIS features the word "RIGIS" in a stylized, blocky font. The letters "R", "I", and "G" are blue, while "S", "I", and "S" are green. The letters are slightly shadowed, giving them a 3D appearance.

Duties and Responsibilities of the Division of Statewide Planning



The staff of the Division (DSP) is responsible for the oversight of the Statewide Planning Program, preparation, and implementation of the State Guide Plan among other things. The State Guide Plan is a series of 18 plans for the physical, economic, and social development of the State. Staff provides technical planning assistance and coordinates the actions of state, local, and federal agencies, and private individuals within this framework. The basic charge is established by [Section § 42-11-10](#) of the RI General Laws. Further responsibilities are specified by other state laws (see table that follows). For example, planning consistency reviews are required for Commerce RI and Quonset Development Corporation projects, energy facility siting, solid waste facility siting, and community comprehensive plans. The Division serves on numerous boards and commissions as required by State Law. The Division contains staff with expertise in planning for [Land Use, Process & Education](#), [Comprehensive Plans & Technical Assistance](#), [Geographic Information System \(GIS\)](#), [Transportation](#), and other topics. As new issues can emerge at any time that require development of a State response or policy, when called upon by the Governor's office, the staff offers technical planning support and coordination of interagency responses for the Governor.

Unified Planning Work Program (UPWP)

Each year, the Division prepares a work program for the coming fiscal year. **The purpose is to identify planning activities that address issues facing the state, and to organize the staff and funding needed to conduct these activities.** The UPWP includes a discussion of the context for state planning performance standards for the current and next year and a list of proposed activities. **The UPWP also serves as a basis for federal transportation planning activities and other planning activities.** It must be approved by the Federal Highway Administration and Federal Transit Administration for the State to qualify for certain transportation-related federal funds. The UPWP is reviewed and approved by the State Planning Council acting as the MPO pursuant to State Law and federal regulations. Learn more about the program and view the current [UPWP on the Division of Statewide Planning website](#).

Division of Statewide Planning Participation on Committees, Commissions, Boards

Last updated February 25, 2025

Appointments specified in R.I. General Law

Committee / Commission	Required by	Appointee/Staff Designee	Status
Energy Facility Siting Board	42-98-5	Meredith Brady	as needed
Executive Climate Change Coordinating Council (EC4)	42-6.2	Meredith Brady	active
Historical Preservation and Heritage Commission	42-45-2	Roberta Groch	active
Natural Heritage Preservation Commission	42-17.5-4	Meredith Brady	active
RI Geographic Information System Executive Committee	42-11-10-(f)-(6)	Christina Delage Baza (Secretary) / Garth Hoxsie-Quinn	active
State Conservation Committee	2-4-3	Paul Gonsalves	active
RI Longitudinal Data System – Data Governance Committee	42-165-1	Vincent Flood / Meredith Brady	active
RI Rivers Council	46-28-4(b)	Paul Gonsalves (staff support)	active
State Planning Council	42-11-10	Meredith Brady (Secretary) / Nancy Hess	active
Transportation Advisory Committee	42-11-10	Mason Perrone / Benny Bergantino	active
Technical Committee	42-11-10	Roberta Groch	active
Water Resources Board	46-15.1-2	Meredith Brady / Paul Gonsalves (alternate)	active

Appointment by Executive Orders or DOA Director

Committee / Commission	Required by	Appointee/Designee	Status
Agricultural Lands Preservation Commission	DOA Director	Paul Gonsalves	active
Rhode Island Resource Recovery Corporation	DOA Director	Meredith Brady (Director's designee)	active

Appointment by Governor

Committee / Commission	Required by	Appointee/Designee	Status
Capital Development and Oversight Commission	35-3-7.2	Meredith Brady	as needed
EC4 Science and Technical Advisory Board	46-6.2-5	Vincent Flood / Meredith Brady	active
New England Interstate Water Pollution Control Commission	46-16-2	Governor Designee	inactive

Participation by State Planning Council or State Guide Plan Implementation

Committee / Commission	Required by	Appointee/Designee	Status
Congestion Management Task Force	<i>SGP 611 – Moving Forward RI 2040</i>	Roberto Echevarria	active
RI Drought Steering Committee	<i>SGP 721 - RI Water 2030</i>	Meredith Brady / Paul Gonsalves	as needed
Recreation Resources Review Committee	<i>SGP – 152 SCORP</i>	Paul Gonsalves	active
RI Resource Conservation and Development Council	State Planning Council	Nancy Hess	active

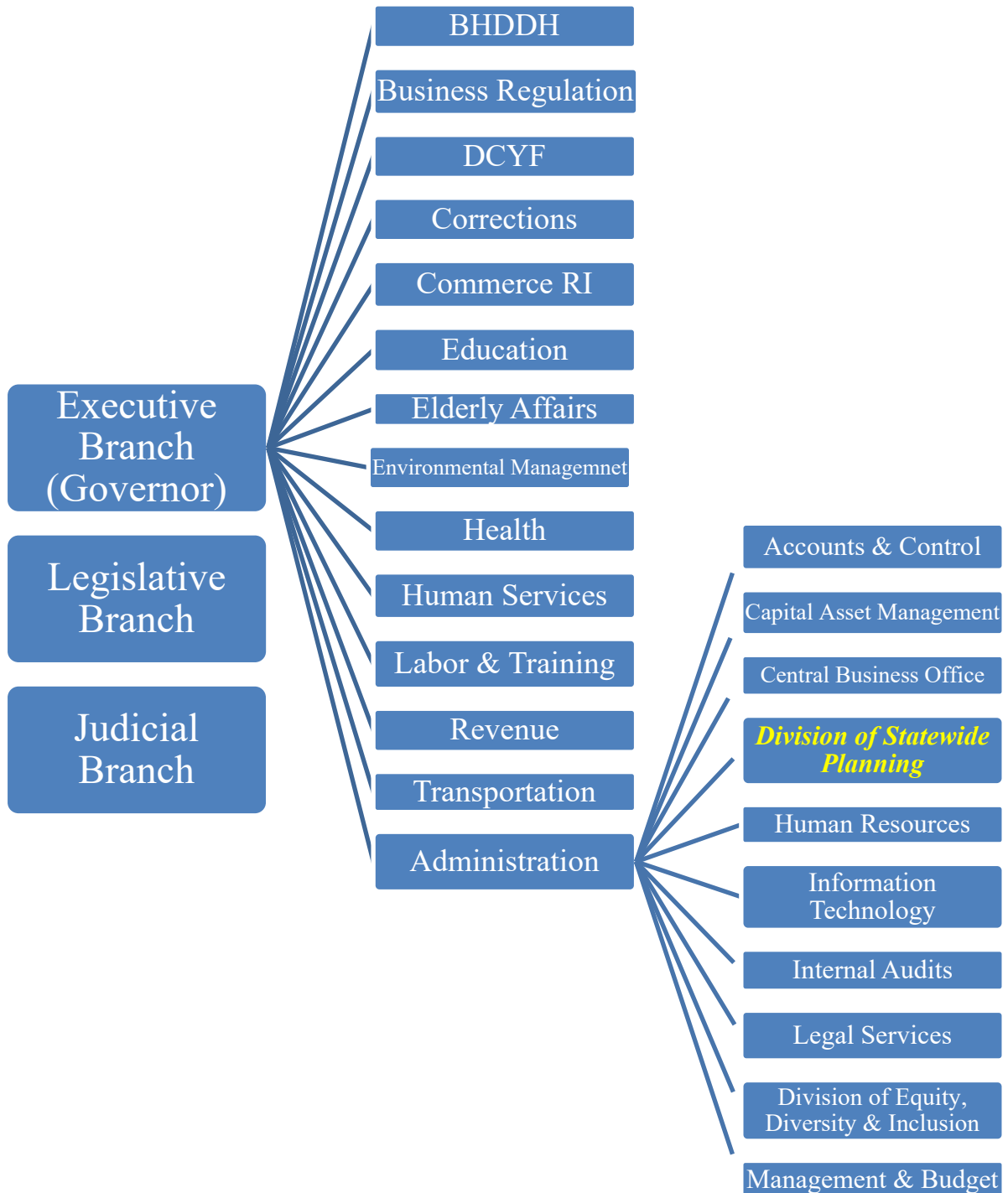
RI State Forest Stewardship Coordinating Committee	<i>SGP 161 - RI Forest Resources Management Plan</i>	Paul Gonsalves	active
--	--	----------------	--------

Participation by Work Program (UPWP) or Other

Committee / Commission	Required by	Appointee/Designee	Status
Accessible Transportation Advisory Committee	UPWP	Benny Bergantino	active
Air Quality Committee	FHW Regulations	Ben Jacobs	active
Building Homes RI Advisory Committee	HUD & CDBG regulations	Paul Gonsalves	inactive
CDBG Program Committee	HUD & CDBG regulations	Paul Gonsalves	inactive
Comprehensive Economic Development Strategy Committee	EDA Regulations	Meredith Brady (DSP) / Roberta Groch (DOA)	active
Environmental Monitoring Collaborative	EC4	Paul Gonsalves	as needed
Highway Safety Planning Committee	UPWP & SGP 611- <i>Transportation 2037</i>	Mason Perrone	active
HOME Advisory Committee	HUD & CDBG regulations	Paul Gonsalves	active
Incident Management Task Force	UPWP	Mason Perrone	active
Interagency Food & Nutrition Policy Advisory Council	UPWP	Paul Gonsalves (advisory)	active

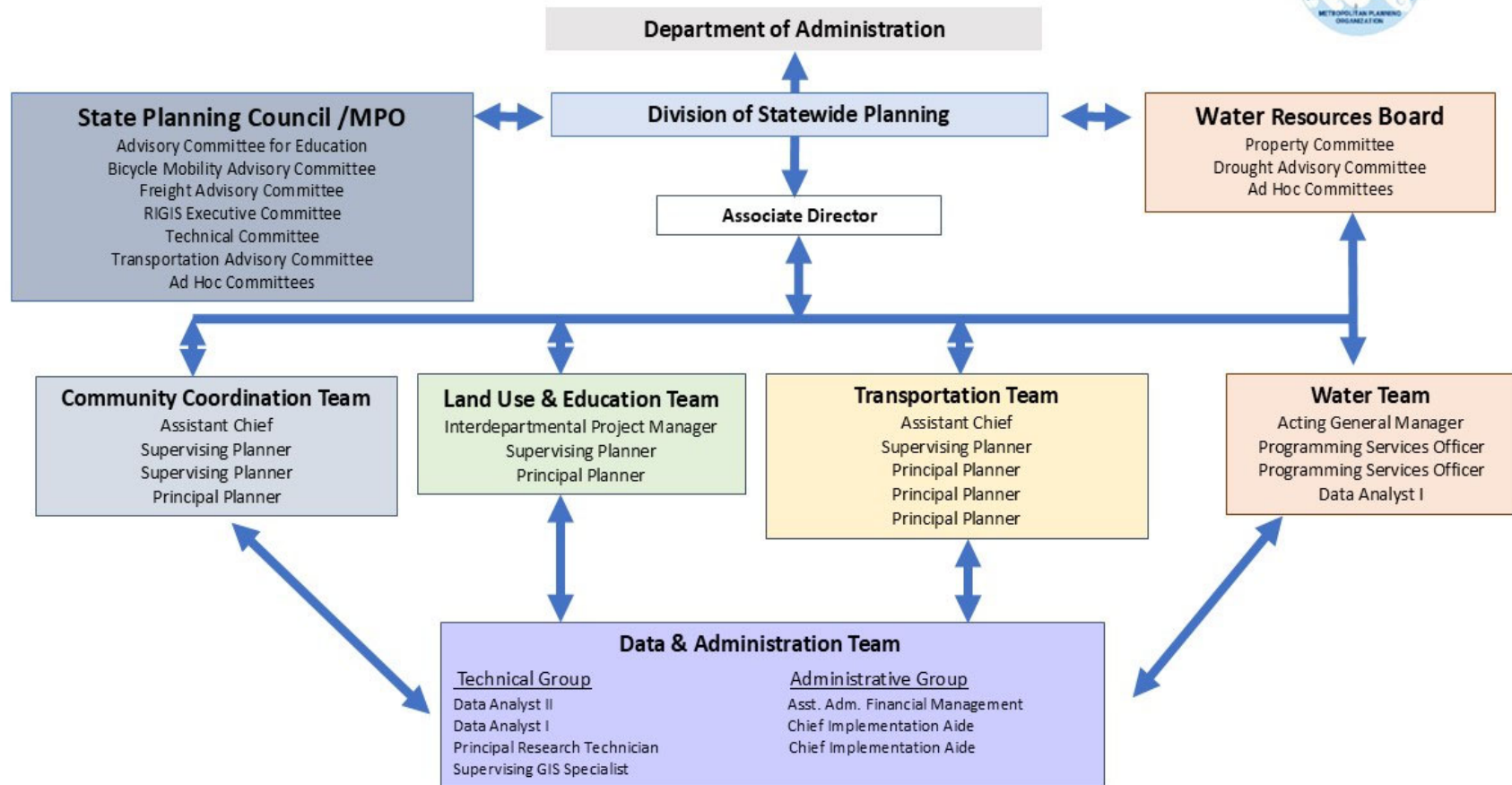
Narragansett Bay Estuary Program Management Committee	UPWP - <i>Water Quality 2035</i>	Nancy Hess	inactive
New England Association of Regional Councils	UPWP	Meredith Brady	active
RIDOT Land Sales Committee	UPWP	Roberta Groch	active
RIPTA Strategic Planning Committee	UPWP	Mason Perrone	active
URI Transportation Center Executive Board	UPWP	Mason Perrone	as needed
Human Services Transportation Coordinating Council (HSTCC)	UPWP	Benny Bergantino	as needed

Department of Administration Organization Structure



Division of Statewide Planning Organizational Chart

Division of Statewide Planning - Organizational Chart 2025



Staff Contact Information

Last updated January 15, 2025

Main Phone: 401-222-7901

	Name	Email
Associate Director	Brady, Meredith	meredith.brady@doa.ri.gov
Transportation Planning		
	Bergantino, Benny	benny.bergantino@doa.ri.gov
	Echevarria, Roberto	roberto.echevarria@doa.ri.gov
	Eskind, Asher	asher.eskind@doa.ri.gov
	Perrone, Mason	mason.perrone@doa.ri.gov
Land Use & Education		
	Gillibrand, Isabelle	isabelle.gillibrand@doa.ri.gov
	Gonsalves, Paul	paul.gonsalves@doa.ri.gov
	Hess, Nancy	nancy.hess@doa.ri.gov
Administrative Staff		
	Capotosto, Paul	paul.capotosto@doa.ri.gov
	Cassin, Lori	lori.cassin@doa.ri.gov
	Mignanelli, Maria	maria.mignanelli@doa.ri.gov
Data & Administration		
	Delage Baza, Christina	christina.delagebaza@doa.ri.gov
	Flood, Vincent	vincent.flood@doa.ri.gov
	Hoxsie-Quinn, Garth	garth.hoxsiequinn@doa.ri.gov
	Jacobs, Benjamin	benjamin.jacobs@doa.ri.gov
Community Coordination		
	Dahl, Abbey	abbey.dahl@doa.ri.gov
	Greeley, Caitlin	caitlin.greeley@doa.ri.gov
	Groch, Roberta	roberta.groch@doa.ri.gov
	O'Neil, Joshua	joshua.oneill@doa.ri.gov
Water Resources Board		
	Barreras, Hector	hector.barreras@doa.ri.gov
	Killian, Patrick	patrick.killan@doa.ri.gov
	Procaccini, David	david.procaccini@doa.ri.gov

State Guide Plan (SGP)

The [State Guide Plan](#) is Rhode Island's centralized and integrated long-range planning document. The State Guide Plan is not a single document but a collection of elements (plans) that published separately and covering a range of topics.

State Guide Plan was established by the [Rhode Island General Law §42-11-10](#), which states:

".... the people of this state have a fundamental interest in the orderly development of the state; the state has a positive interest and demonstrated need for establishment of a comprehensive strategic state planning process and the preparation, maintenance, and implementation of plans for the physical, economic, and social, development of the state.... The state guide plan shall be comprised of functional elements or plans dealing with land use; physical development and environmental concerns; economic development; human services; and other factors...The state guide plan shall be a means for centralizing and integrating long-range goals, policies, and plans."

The State Guide Plan provides a degree of continuity and permanent policy direction for the state's future development. The [State Planning Council](#) is responsible for approval of all elements of the State Guide Plan. The State Guide Plan currently contains 17 elements that can be grouped into functional areas. See **Current State Guide Plan Elements** section in the following pages for hyperlinks and summary descriptions, including the date of the most recent amendment, and its designated element number.

How is the State Guide Plan Used?

The State Guide Plan has four (4) functions:

1. Sets long-range policy (generally 20 years);
2. Provides a means to evaluate and coordinate projects or proposals of state or regional importance;
3. Sets standards for local comprehensive plans, and
4. Serves as a general background information source on various topics.

Plans as State Policy Positions

At its most ambitious, the State Guide Plan establishes broad goals for the State's future and sets proactive policy positions. Individual elements provide objectives and strategies that advance implementation for these positions. The creation, adoption, and maintenance of each element provides opportunities for all state entities and their constituencies to be involved in setting these policy positions. This process seeks to ensure that issues have been thoroughly researched, options have been evaluated, and policies are consistent with other plans.

Plans as Tools to Evaluate and Coordinate Projects of State Importance

The State Guide Plan provides standards by which specific projects or proposals are evaluated for consistency with state goals, objectives, and policies. This review function is used in a variety of contexts. Some involve only state agencies while others involve the interaction of federal or local entities with the state. Items that are evaluated for consistency with the State Guide Plan include:

- Direct federal projects within the State.
- Proposals requesting federal funds.
- Applications for U.S. Army Corps of Engineers permits.
- Environmental Impact Statements.
- Rhode Island Commerce Corporation projects.
- Projects being reviewed by the Energy Facility Siting Board.
- Applications for various loans, grants, or other funding coming from State financing.
- Property leases and conveyances proposed before the State Properties Committee.

Plans as Tools to Assure Consistency of Local Plans

The *Comprehensive Planning and Land Use Regulation Act*, enacted in 1988 and amended in 2011, requires every Rhode Island city and town to adopt a comprehensive plan. Each local comprehensive plan is required to be consistent with the State Guide Plan. The State Guide Plan serves both as a guidance document to municipalities as they formulate their individual comprehensive plans and subsequently as one of the standards by which the State reviews the local plans.

Current State Guide Plan Elements

*=Update actively in progress as of March 2026

Economic Development – [*Ocean State Accelerates*](#) (2023) – Presents goals, policies, and strategies for the continuous enhancement of the economy. Profiles the state’s economy using key indicators.

Energy – [*Energy 2035, Rhode Island State Energy Plan*](#) (2015) – Element 781 – Sets goals and makes recommendations for meeting future energy requirements in light of the state’s economic development, transportation, and environmental needs.

Historical Preservation and Cultural Heritage – [*Protecting Our Legacy of Buildings, Places, and Culture: An Historic Preservation Plan for Rhode Island*](#) (2021) – Element 210 - The Historic Preservation State Guide Plan focuses on plans and programs for the preservation of historic sites and structures in Rhode Island. It provides guidance for municipalities and state agencies through goals, objectives, strategies, and policies for preservation.

Housing – [*Housing 2030: Building Rhode Island’s Future*](#) (2025) –Element 421 –Establishes housing goals and policies. It also analyzes major housing problems in Rhode Island and makes recommendations for action.

Land Use – [*Land Use 2025: Rhode Island’s State Land Use Policies and Plan*](#) (2006) – Element 121 – Sets forth a statewide land use policy with a 20-year time horizon. It covers topics such as general land development, economic development, housing, energy, transportation, water resources, and recreation and open space. An [*Executive Summary*](#) is also available for this publication.

Natural Resources

- [*Forest Resources Management Plan*](#) (2005) – Element 161 – Establishes a vision, goals, and policies and provides recommendations focused on the management of tree resources to advance the effectiveness of public and private stewardship of the state’s tree and forest resources.
- [*Urban and Community Forestry Plan*](#) (1999) – Element 156 – Establishes a vision, goal, and policies and provides recommendations focused on the management of tree resources within the built environment. Provides guidance for local stewardship of tree resources to advance a healthy, sustainable economy and environment.
- [*A Greener Path: Greenspace and Greenways for Rhode Island’s Future*](#) (1994) – Element 155 – Sets forth policies and program initiatives to create a system of state and local greenspaces and greenways, including natural corridors, trails, and bikeways. Identifies areas that have multiple values as open space (e.g., water resources, wildlife habitat, scenic landscapes).

Outdoor Recreation* – [*Ocean State Outdoors: Rhode Island’s Comprehensive Outdoor Recreation Plan*](#) (2019) – Element 152 - Sets policies and action agendas for providing priority recreation needs while protecting the state’s resource base. Assesses the status of issues and needs in recreation resources, land preservation, and resource protection.

Solid Waste Management* – *Solid Waste 2038 – Rhode Island Comprehensive Solid Waste Management Plan* (2015) – Element 171 – Describes existing practices, programs, and activities in all major solid waste management areas. Sets goals, policies, and makes recommendations regarding source reduction, recycling, landfilling, management of special wastes, and financing costs of the system.

Transportation

- *State Airport System Plan* (2011) – Element 640 – Establishes goals, objectives, policies, and strategies for the development and management of the State’s airports. It includes an overview of system needs through the year 2021.

- *Moving Forward Rhode Island 2050, Long Range Transportation Plan (LRTP)** (2025) – Element 611 – Provides a long-range framework, goals, policies, and recommendations for the movement of both goods and people. It encompasses the highway system, public transit, system management, bicycle travel, pedestrian, intermodal, & regional transportation needs. Components of the LRTP include:
 - *The Statewide Bicycle Mobility Plan.*
 - *Congestion Management Plan.*
 - *Transit Master Plan.*

- *Rhode Island State Rail Plan 2014* (2014) – Element 661 – The State Rail Plan addresses Rhode Island’s passenger and freight rail transportation needs over the next twenty years. It describes the state’s existing rail systems, assesses future needs, and includes prioritized short and long-term investment programs.

- *Rhode Island Waterborne Passenger Transportation Plan* (1998) – Element 651 – Analyzes the potential for expanded use of Rhode Island's waters for passenger transportation and makes recommendations for long-range development of water transportation services and facilities.

Water Resources

- *Rhode Island Water 2030* (2012) – Element 721 – Examines issues connected to drinking water and establishes goals, policies, and actions to maintain existing and protecting future drinking water supplies.

- *Water Quality 2035, RI Water Quality Management Plan* (2016) – Establishes goals, policies, and actions for the protection and restoration of all the State’s water resources, both fresh and salt water. It serves as the nonpoint source management programs required by the United States Environmental Protection Agency and the National Oceanic and Atmospheric Administration.

APPENDIX A: RI General Laws Related to Other Land Use and Planning

§ 42-46 OPEN MEETINGS ACT

This Act set forth requirements for “public bodies” to conduct business in an open manner so that the public may easily participate. This law set standards for posting notices, emergency meetings, executive sessions, and taking and providing minutes of meetings.

§45-22 LOCAL PLANNING BOARD OR COMMISSION

This Act institutes the requirement that all municipalities must establish a planning board or commission. The statute also sets size limits for a board/commission as well as powers and required duties.

§45-22.1 JOINT MUNICIPAL PLANNING COMMISSION

This Act authorizes two or more municipalities to establish a joint municipal planning commission.

§45-22.2 RI COMPREHENSIVE PLANNING AND LAND USE REGULATION ACT

This Act establishes a system of land use planning whereby the State sets broad goals and policies through the State Guide Plan and municipalities develop comprehensive plans that reflect local desires and conditions but must be consistent with the State Guide Plan. The local comprehensive plans serve as the basis for land use regulation and establish an implementation program for achieving stated goals. The municipal zoning ordinance and map must be consistent with the comprehensive plan.

§45-23 RHODE ISLAND LAND DEVELOPMENT AND SUBDIVISION REVIEW ENABLING ACT

This Act establishes land development and subdivision enabling authority and requires each city and town to develop land development and subdivision regulations in accordance with the community comprehensive plan, capital improvement plan, and zoning ordinance, and to ensure the consistency of all local development regulations. It also sets certain standard procedures for review and approval of land development and subdivision requests.

§45-24 RHODE ISLAND ZONING ENABLING ACT

This Act authorizes municipalities to establish zoning districts that establish regulations and standards relating to the nature and extent of uses of land and structures within the district.

§ 45-53 LOW- AND MODERATE-INCOME HOUSING ACT

This Act requires municipalities to provide opportunities for the establishment of low- and moderate-income housing. The law also establishes a “comprehensive permit” process whereby an applicant proposing to build low- or moderate-income housing may submit to the local review board a single application in lieu of separate application to the applicable local boards.