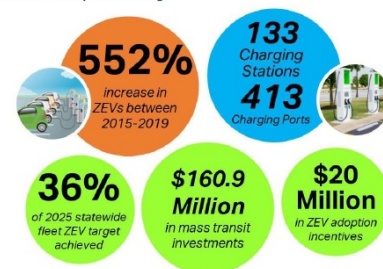


February 2021

The Rhode Island Clean Transportation and Mobility Innovation Strategy

Although the Mobility Innovation Working Group began meeting in August 2020, the work behind developing a strategy began in February of 2020, pre-pandemic, with a small internal team that included the Division of Statewide Planning and other Rhode Island agencies and cabinet-level staff. Information was collected for the mobility audit, incorporated in the final report, in the spring.

Figure 18. Audit Key Data Findings



At the beginning of the summer, with a consultant (AECOM) at last on board, the Working Group itself was named, with diverse representation across the public and private sector, including industry leaders throughout Rhode Island. Of the 26 members, 12 were associated with state government and 14 were non-governmental groups or private sector companies. This broad bench of stakeholders and viewpoints resulted in a collaborative and comprehensive document that collects the work Rhode Island has done so far (Figure 18) and lays out potential solutions in illustrative portfolios and key recommendations.

During the latter part of the summer and throughout the fall, the group heard from various experts, including Dr. Daniel Sperling, author of Three Revolutions: Steering Automated, Shared, and Electric Vehicles to a Better Future, and experts on topics such as equity and automation.

The final product of the Working Group and surrounding information-gathering process is the **Clean Transportation and Mobility Innovation** report is organized in four principal sections, along with an Executive Summary and Appendices:

- **Facts, Trends, and Issues**, which provides background and lays out the five key considerations on which the process focused: equity, vehicle electrification, job creation and innovation, health and safety, and transportation options.
- **Clean Transportation and Mobility Audit and Peer State Inventory**, which looks at the good work completed in Rhode Island in the last five years, along with a review of programs in other states to help develop implementable ideas for the path forward.

- **Illustrative Investment Portfolios**, which lays out the data and provides analysis associated with three sample portfolios (Electrification, Mobility, and Blended) developed using a blend of strategies from four key categories: electrification and alternative fuels; vehicle travel reduction; transit and rail; and traffic efficiency.
- **Recommendations and Action Steps**, which synthesizes the information garnered from the Audit, the five webinar-based Working Group meetings, the Public Input meeting, the investment portfolio analysis, and the recommendations submitted by the Working Group members. There are 24 recommendations and 37 initial action steps laid out around six guiding principles, as follow:

1. *Create a healthier environment for all Rhode Islanders with specific benefits for residents of our most overburdened and underserved communities;*
2. *Establish Rhode Island as a national leader in bold transportation and climate commitments;*
3. *Modernize, expand and invest in state transit and transportation assets to effectively move more people and improve accessibility;*
4. *Improve air quality by taking steps to electrify the transportation sector;*
5. *Create a 21st century mobility infrastructure that capitalizes on the emerging changes in transportation technology;*
6. *Unlock economic opportunity, promote green job creation and support business and supply chain industries*

Ultimately, the report provides a menu of options for taking the next, crucial steps forward in shifting our mode of transportation, building a cleaner, greener, and more equitable economy, and developing resilient and modern transportation systems.

Five-Year Comp Plan Update Roundtable

Your community's Comp Plan was approved years ago: you're all set, right? Not so fast!

State law requires that a municipality with an approved comprehensive plan draft (and submit) an update on progress towards achieving the Plan's goals every five years. Join Statewide Planning staff and experienced town planners to learn about this update, how to draft it, what it should look like, and how to incorporate achievable goals into your Comp Plan.



An informal roundtable discussion about the required five-year updates will be held virtually on **Thursday, February 25 from 12PM-1PM**.

Contact Roberta.Groch@doa.ri.gov to receive the Zoom login information.

RI Planner Spotlight: Michael Antonellis

Michael Antonellis started as the Town Planner for the Town of Foster in June 2020. He graduated from UMass Amherst in 2013 with a Master's Degree in Regional Planning and a concentration in economic development and has worked in all three of the southern New England States: Connecticut, Massachusetts, and now Rhode Island. He says, "The thing I enjoy the most about the planning profession is constantly



being introduced to new topics that have to be researched and understood in order to provide for adequate policy." Currently, Michael is working on the Town's Capital Improvement Program, updating the Comprehensive Plan, managing RIDEM Open Space grants, working with the Planning Board to identify needed updates to the zoning ordinance, and "the usual subdivisions and day-to-day planning business."

Personally, Michael and his wife have two young children, ages four and one. "When I am not delirious from sleep deprivation, I fill my time playing and recording music for my own enjoyment to stretch my creative muscle. The kitchen is the room in my house I am most comfortable in and I find cooking to be a form of meditation and relaxation. "

Contact Michael at mantonellis@townoffoster.com and welcome him to our Little Rhody planning community!

Brady's Brief Bulletin

You may have noticed the snow outside your window today, and you have probably also heard a range of forecasts for this particular winter storm. On my Facebook feed, there are memes highlighting the vast differences in forecasts between different models. "Snow forecast!" the graphics exclaim, "0 to 60 inches!" Well, did you know that the pandemic, aside from impacting almost every area of our work and professional lives, has impacted meteorology, or at least the data that forecasting relies upon? Yes, really.

Why? Fewer planes and boats taking regular, routine trips. On average, aircraft data provides up to 13% of the data for the European model. TAMDAR (Tropospheric Airborne Meteorological Data Reporting), small equipment installed on many commercial planes, has been curbed dramatically by the limited number of flights. A year out, sensors are starting to go dark on buoys supplying remote data for maritime storm forecasting.

I'm fascinated by this change, as someone who almost pursued meteorology as a career. I'm also struck by the similarity to issues we face in planning. If a plan without data is a guess, and now we're missing a lot of data, how do we move forward with data-driven initiatives? What if the data we are getting has been fundamentally changed by COVID-19? What next? Certainly, some conditions have changed: will we return to the same patterns of behavior post-pandemic? How quickly? Will every company that moved to remote work shift back?

I'd love to hear your thoughts about how COVID-19 has impacted the ways in which you work and live your day-to-day life (aside from the obvious mask wearing and social distancing). What trends are you seeing in your communities? Let me know at meredith.brady@doa.ri.gov or call/text (401) 368-7601.

PHOTO TRIVIA

Do you know where this site is located in RI?

See the answer at the bottom
of the newsletter!



Upcoming Meetings

Please check the links to see if a meeting has been canceled or changed.

[Technical Committee](#)

February 5 - 9AM via Zoom

[State Planning Council](#)

February 11- 9AM via Zoom

[Transportation Advisory Committee](#)

February 25 - 5:00PM via Zoom

All meetings are open to the public.

Please click on the links to find out how to attend virtually.

Virtual Events

February 2 [Blue Innovation Symposium: The Next Wave](#). The Blue Innovation Symposium is the premier event in New England for education and partnering opportunities in the marine technology industry. This first event is virtual; a second event will be held in late spring or early summer. Time: 2PM-4PM. Fee: \$0-\$25.

February 3 [Aligning Community Solar with Antiracist Policies](#). Join Climate Action Rhode Island for a presentation by environmental anthropologist Myles Lennon on aligning community solar campaigns with antiracist principles— linkages that can help communities of color rebuild after Covid-19. Time: 7PM. [Pre-registration](#) is required.

February 3 [Robert's Rules for Online Meetings](#). This interactive workshop will present an overview of standard parliamentary procedure along with best practices for using digital meeting technology and the practical skills necessary to participate in a virtual public meeting. Presented by the Hassenfeld Institute for Public Leadership, the RI Association of School Committees, and the RI League of Cities & Towns. Time: 10AM-11:30AM. Free.

February 9 [Land Use and Transportation Policies for a Sustainable Future](#). Self-driving cars could increase VMT by increasing roadway capacity; however, they may reduce VMT through more car-sharing and improving transit access. This U.S. DOT webinar will discuss the likely effects of AV and potential policy scenarios. Time: 1PM-2PM. Free. 1 CM.

February 10 [How to Bring Democratic Decision-making to Community Engagement](#)

This panel will remove boundaries between the urban planner and community resident by teaching the skills necessary to negotiate competing priorities and find agreement that supports an inclusive community. Examples will be presented. Time: 1PM-2PM. Free.

[URI Landscape Architecture Lectures:](#)

- **February 11 ["Urban to Rural Renewal."](#)** Allison Desbonnet, Copley Wolff Design Group- Boston, and Stephen Thompson, Architect- Phoenix, AZ. Time: 6PM.
- **February 18 [Lecture title: TBD.](#)** Mitchell Silver, Commissioner- NYC Parks. Time: 6PM.

February 11 [Architectural Review & Regulations for Planners and Planning Boards.](#) Few professional planners and planning board members are comfortable discussing the design of proposed new structures; this webinar will provide the basics for talking about architecture and for crafting architectural regulations as part of site plan review. Time: 1PM-2:30PM. Free. 1.5 CM.

February 12 ["The Shame of Chicago: The Color Tax."](#) This documentary episode presents how, in a striking example of systemic racism, predatory home sales in Chicago during the 1950s and 60s plundered wealth from the pockets of black families... but they fought back. A moderated discussion will follow the screening. Time: 1PM-2:30PM. 1.5CM. Free.

February 16 [Safe Routes to School 2021: Let's Walk the Walk.](#) As schools prepare to fully reopen, how can Safe Routes to School programs (SRTS) help prepare for the resurgence of children crossing busy intersections? This webinar features two research projects that dive into the racial and geographical demographics of students in areas with SRTS programs at different stages of implementation. Time: 1PM-2PM. Free.

February 17 [Impacts of the COVID-19 Pandemic and Potential Redevelopment Options for Retail Spaces.](#) COVID-19 has had significant negative impacts on traditional shopping malls and "big box" retailers: this webinar will discuss the potential for mall space to be adaptively reused/redeveloped as housing and other options and will include case studies from around the country. Time: 12PM-1:15PM. Free. 1.25 CM.

February 19 [Health in All Policies: Incorporating Health into Planning, Policy and Decision-Making.](#) "HiAP" is a strategy that strengthens the link between health and other policies; it considers the impacts of non-health policies on population health. This all-day course focuses on bringing community health and equity into planning processes and decision-making. Time: 9AM-1PM. Course fee: \$225. 4 CM.

February 24 [Crash Risk for Low-Income and Minority Populations: Identifying Underlying Risk Factors.](#) Lower-income and minority populations are disproportionately at risk of injury or death while walking or bicycling: this webinar presents how risk can be moderated by the design of the built environment. Time: 2PM-3PM. Free.

February 24 [Examining Food Insecurity in Rhode Island.](#) This webinar will examine the causes of the high levels of food insecurity and discuss methods to alleviate this problem. Panel 1: "Sugar Sweetened Beverage Taxes as a Funding Mechanism for SNAP." Panel 2: "Food Access & Transportation: An Equity Intersection." Time: 10AM-12PM. Free.

February 25 [Five-Year Comp Plan Update Roundtable.](#) Join Statewide Planning staff and experienced town planners to learn about this update, how to draft it, what it should

look like, and how to incorporate achievable goals into your Comp Plan. Time: 12PM-1PM. Free. 1 CM. For login information, please contact [Roberta Groch](#).

February 26 [RI Planners' Book Club](#) This month's book is *The Warmth of Other Suns: The Epic Story of America's Great Migration*, by Isabel Wilkerson. Please read the book to support a lively discussion! Time: 12PM-1PM. Free. 1 CM. For virtual login information, please contact [Caroline Wells](#).

March 5 [Climate Adaptation Forum: Municipalities Adapt to the Climate Crisis](#). The climate crisis is a global problem, but its impacts are felt closer to home. Experts from New England and beyond will discuss innovative adaptation strategies being implemented in local communities. Time: 10AM-1PM. Fee: \$5-\$15.

Anytime [Cities in the Time of COVID-19: How Do We Respond to Anti-Black Racism in Urbanist Practices and Conversations?](#) This on-demand webinar encourages planners to respectfully engage with Black Americans and uplift the expertise of Black urbanists in order to develop authentically inclusive urban spaces. Free.

Grant Opportunities

February 11 [Newport County Fund Grants](#) deadline. These RI Foundation grants range from \$1,000 to \$10,000. Areas where grants may be awarded are: project development support for new programs; strengthening and/or expanding established community programs and services; community or municipal planning and/or leadership; and/or policy or advocacy efforts on behalf of community concerns.

February 25 [Access to Historical Records](#) deadline. The National Historical Publications and Records Commission seeks projects that will improve public discovery and use of major historical records collections, especially interested in collections of America's early legal records that document the evolution of the nation's legal history.

February 26 [North American Wetlands Conservation Act Grant](#) deadline. NAWCA provides matching grants to increase bird populations and wetland habitat through providing valuable wetland benefits such as flood control, reducing coastal erosion, improving water and air quality, and recharging ground water.

March 2 [The Institutes for Advanced Topics in the Digital Humanities](#) deadline. This National Endowment for the Humanities program is accepting applications for the to support national or regional training programs for scholars, humanities professionals, and graduate students to broaden and extend their knowledge of digital humanities.

March 21 [RI Foundation Community Grants](#) deadline. This program provides grants up to \$10,000 for community-making efforts. For 2021, projects should: build social networks and connection among neighbors; develop and sustain strong relationships; enhance the role of shared public spaces as community anchors; help people collaborate to identify goals, solve problems, or make group decisions; and/or share traditions.

Planning Articles of Interest

[Massive warehouse proposed near T.F. Green](#)

[Planners approve rezoning for former St. Joseph's hospital amid neighbor concerns](#)

[Charlestown's only Dunkin' wants to relocate](#)

[Newport hopes to turn the North End into an "innovation hub"](#)

[Narragansett Bay blasting will make way for submarine traffic](#)

[Undocumented immigrants will count in 2020 Census](#)

RI Statewide Planning Staff

Click on staff person's name for their email address:

[Meredith Brady](#), Associate Director
401/222-6496

[Roberta Groch](#), AICP- Assistant Chief
401/222-4720

[Benny Bergantino](#), Principal Planner
401/222-1755

[Nancy Hess](#), Supervising Planner
401/222-6480

[Linsey Callaghan](#), Assistant Chief
401/222-6479

[Benjamin Jacobs](#), Principal Research
Technician
401/222-3949

[Paul Capotosto](#), Fiscal Management Officer
401/222-6170

[Maria Mignanelli](#), Chief Implementation
Aide

[Michael D'Alessandro](#), AICP- Supervising
Planner
401/222-2177

[Kevin Nelson](#), Supervising Planner
401/222-2093

[Christina Delage Baza](#), Data Analyst I
401/222-6481

[Joshua O'Neill](#), AICP- Supervising Planner
401/222-4849

[Vincent Flood](#), Data Analyst II
401/222-1243

[Mason Perrone](#), Principal Planner
401/222-7966

[Kim Gelfuso](#), Internet Communications
Specialist
401/222-5764

[Catherine Pitassi](#), Executive Assistant
401/222-7901

[Caitlin Greeley](#), Principal Planner
401/222-2848

Water Resources Board staff:
[Kathleen Crawley](#), Acting General Manager

[Paul Gonsalves](#), Principal Planner
401/222-1756

[Timothy Stagnitta](#), Programming Services
Officer

PHOTO TRIVIA ANSWER:

EXETER

[Queen's Fort](#) (1676)

Photo: [Rock Piles](#) website