

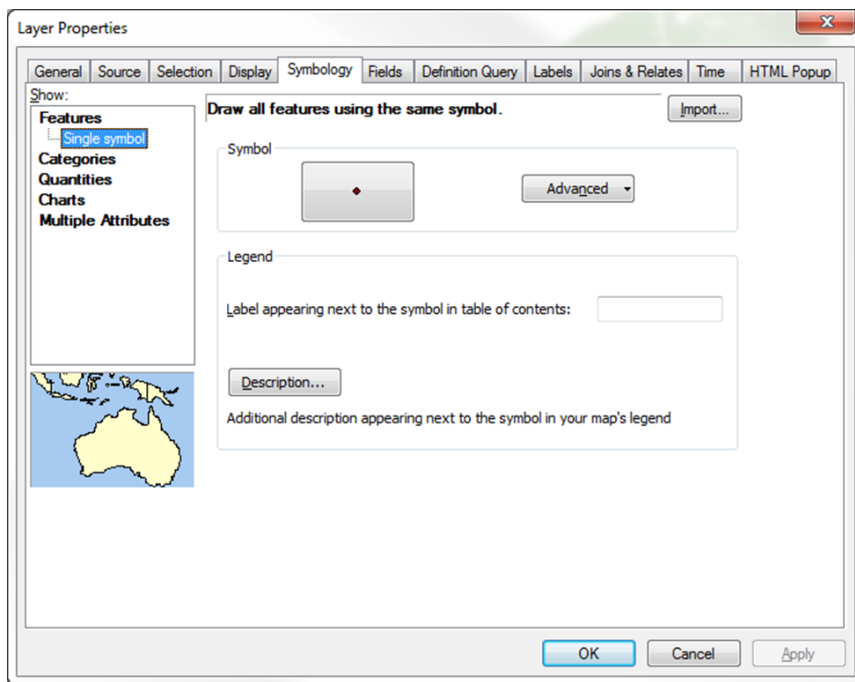
For this example we will use the Fire Stations dataset...

Download the Fire Stations dataset from RIGIS

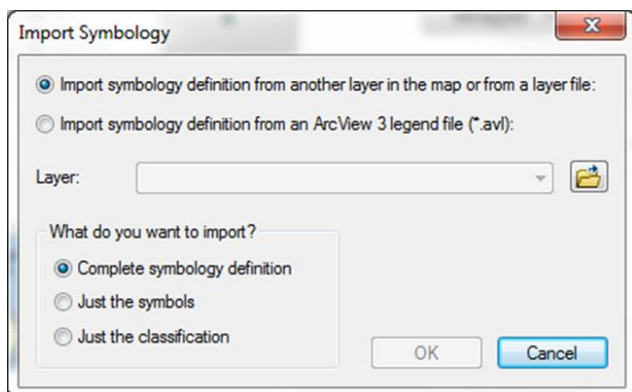
Add the Firestations dataset to your ArcMap project

Double Click on the dataset in the Table of Contents window

Click on the "Symbology" Tab



Click on the "Import..." button

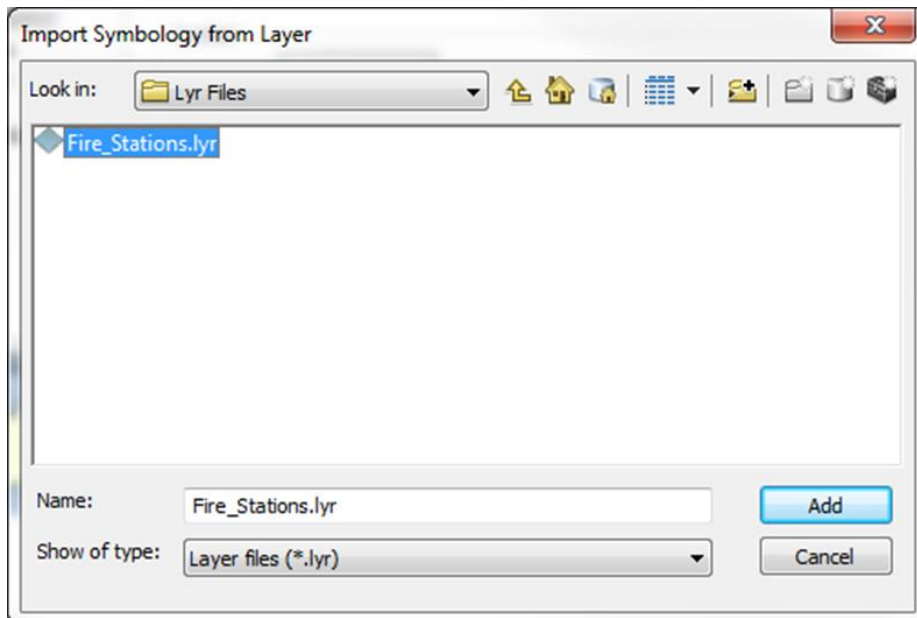


"Import symbology definition from another layer in the map or from a layer file" button should be selected

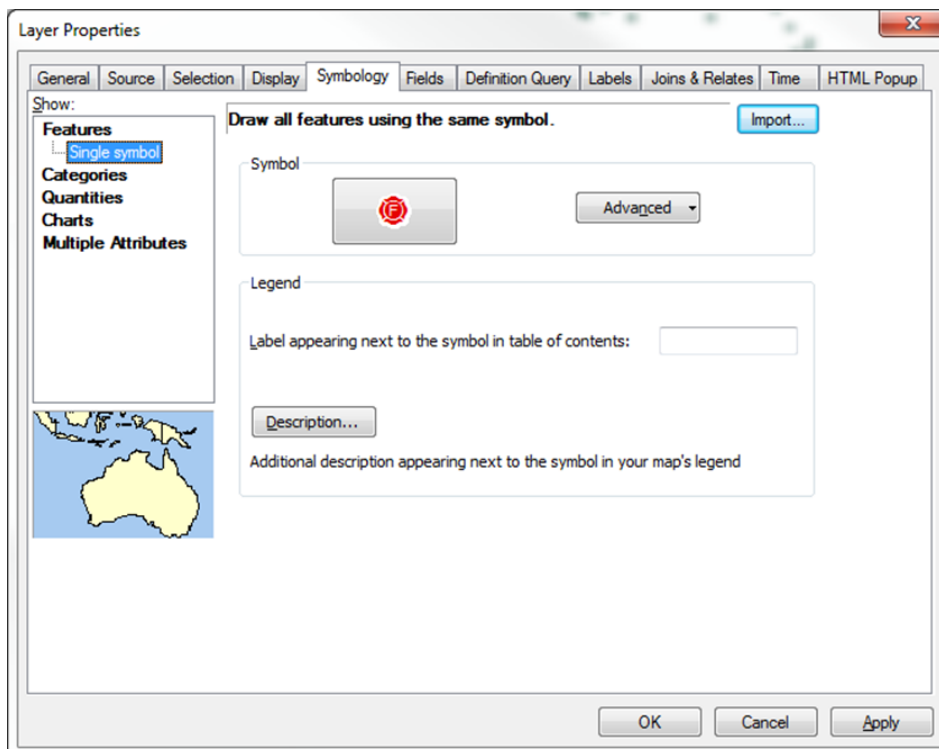
Browse to the folder where you downloaded the .Lyr file

Highlight the file...it should show up in the "Name" box

Click the "Add" button



The symbol should show up...click "Apply" button



Click "OK" button

The Symbology should now show up for that dataset in your Table of Contents window.

Some of the datasets also require a "QUERY" to select out a specific sub-set of features

Any dataset that requires the use of a "QUERY", the text has been provided underneath each .Lyr download.

In this example we will select out forested areas from the Ecological Communities Classification dataset with the following QUERY:

```
"Class" = 'Coniferous Woodlands and Forests' OR "Class" = 'Deciduous Woodlands and Forests'  
OR "Class" = 'Mixed Deciduous/Coniferous Forests' OR "Class" = 'Plantation and Ruderal Forest'
```

Any dataset that requires the use of a Query, the text has been provided underneath each .Lyr download.

Follow the same steps above for the Symbology but there is one additional step required to paste in the "QUERY" ...see below

Double Click on the dataset in the Table of Contents window

Click on the "Symbology" Tab

Click on the "Import..." button

"Import symbology definition from another layer in the map or from a layer file" button should be selected

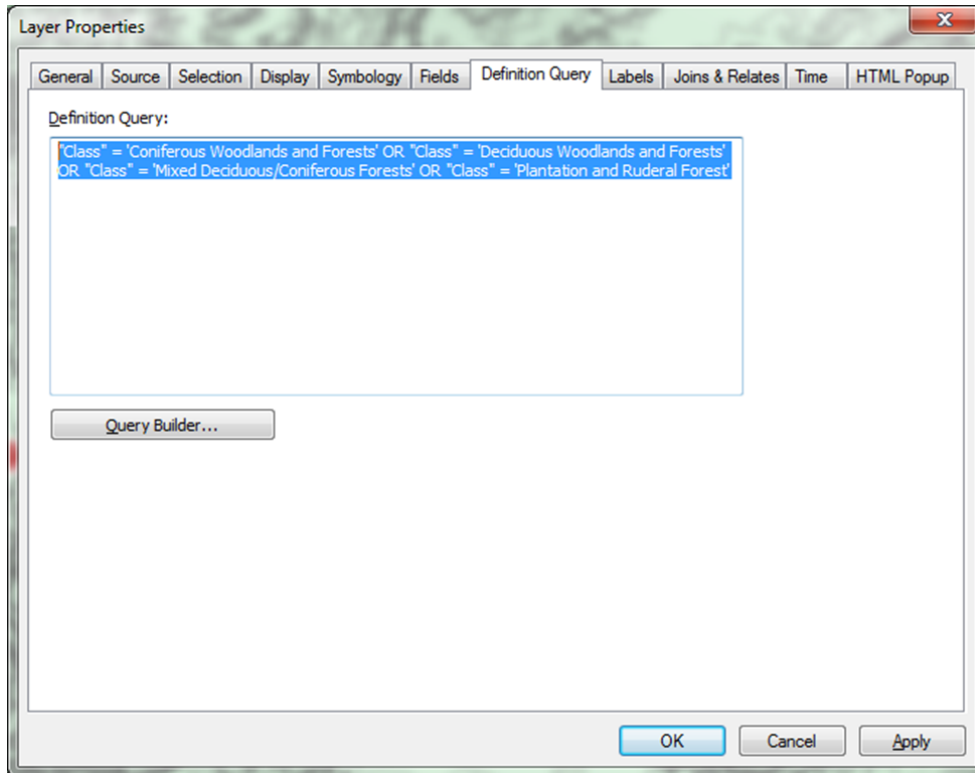
Browse to the folder where you downloaded the .Lyr file

Highlight the file...it should show up in the "Name" box

Click the "Add" button

The symbol should show up...

Now click on the "Definition Query" tab and paste in the "Query" text provided, into the text box...in this case, "Class" = 'Coniferous Woodlands and Forests' OR "Class" = 'Deciduous Woodlands and Forests' OR "Class" = 'Mixed Deciduous/Coniferous Forests' OR "Class" = 'Plantation and Ruderal Forest'



click the "Apply" button

Click the "OK" button

The Symbolization and the specific queried selection should now show up on the Table of Contents window.

If you need assistance and/or have any questions, contact Vin Flood at 401-222-1243, or email Vincent.flood@doa.ri.gov