



October 2023

October is National Community Planning Month



"Planners work to improve the well-being of all people living in our communities by taking a comprehensive perspective. This approach leads to safer, resilient, more equitable, and more prosperous communities."
American Planning Association.

Draft CEDS is Ready for Review

Rhode Island Commerce and the RI Division of Statewide Planning have been working on a new comprehensive economic development strategy ("CEDS") for Rhode Island, called *Ocean State Accelerates*. Along with a steering committee comprised of representatives from agencies, non-profits, community groups and others, the project team has been working with consultants Camoin Associates and &Access to craft a new strategy.



A CEDS is reviewed and approved by the U.S. Economic Development Administration (EDA), which calls it "the result of a regionally-owned planning process designed to build capacity and guide the economic prosperity and resiliency of an area or region." A CEDS must be updated every five years for a region to qualify for EDA assistance under its Public Works and Economic Adjustment Assistance programs. The EDA provided the funding for this CEDS through a grant to RI Commerce. When approved, the new strategy will replace the current interim CEDS, *Rhode Island Innovates 2.0*.

The draft CEDS is currently available on SmartComment for viewing and to submit comments until October 20, 2023 at this link. Please take some time to read the document and add your thoughts. We want to hear your voice!

SNEAPA 2023- October 5 & 6



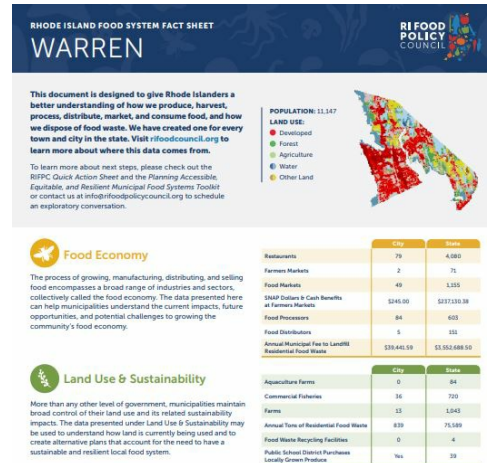
Join more than four hundred local planners and others at the Southern New England Conference of the American Planning Association ("SNEAPA") to share experiences, collaborate, network, and learn.

This year's conference is being held at the Omni Hotel in New Haven, Connecticut. Hotel rooms are available at the nearby New Haven Hotel.

Registration is now available at www.sneapa.org and the cost varies from \$55 -\$315.

Local Food System Fact Sheets

Updated for 2023, local food system fact sheets from the RI Food Policy Council are a resource for every city and town in the state, providing municipal leaders with recent and relevant metrics. Each municipal fact sheet offers a snapshot of the most pressing food systems issues and can be a useful guide for community conversations on areas in need of additional support and investment, such as food production, food manufacturing, food businesses, food access and security, food waste diversion, land use, and climate change resilience.



Go to the the RI Food Policy Council website to view the fact sheets: <https://rifoodcouncil.org/>.

Historic District Commissioners' Training



There will be a free training held on **Saturday, October 28** as part of the Statewide Planning 2023-2024 Municipal Education Program that will cover many topics of interest to commissioners, such as community engagement, meeting procedures, standards and guidelines for design review, enforcement and violations, and legal basics.

Rhode Island law requires all historic district commission (HDC) members to complete an approved three-hour (or more) training program one time within two years of June 22, 2022, or within one year of a new appointment. This training will fulfill the requirement for HDC members.

Led by the National Alliance of Preservation Commissions, the training will be held from 9AM–4:30PM (free breakfast and lunch provided) at the Warwick City Hall Annex ("Sawtooth Building"), 65 Centerville Road, Warwick.

Statewide Planning is pleased to collaborate with the RI Historic Preservation and Heritage Commission to bring this training to local volunteers. Registration is here.

Planners on the Move (a.k.a., "Musical Chairs")

Here's where municipal planners in RI have moved to:

- **Talia Jalette**, the former Town Planner in Hopkinton, is the new Town Planner in Richmond;
- **Ken Kirkland, AICP** is the Assistant Director of Planning in Cranston, having recently served as the Woonsocket City Planner;
- **Nicholas Armour**, the former Historic Preservation Planner in Newport, is now the city's Zoning Officer;
- **Alex Berardo** has moved from the Cranston Planning Department to become the Principal Planner in Coventry;
- **Jenna McCauley** has been promoted from Planning Technician to Principal Planner in North Kingstown; and
- **Ryan Dipanni** is the new Planning Technician in Narragansett.



Congratulations, everyone!

Statewide Planning Meetings

All meetings are open to the public.

State Planning Council

October 12- 9AM

Room 2A, 1 Capitol Hill- Providence

Freight Advisory Committee

October 19- 10:00AM

QDC Annex Building
95 Cripe St.- North Kingstown

Water Resources Board

October 20 - 9AM

Room 300, 235 Promenade St.
Providence

Transportation Advisory Committee

October 26 - 5:30PM

Room 300, 235 Promenade St.
Providence

PHOTO TRIVIA

Where in Rhode Island can you find this building?



See the answer at the bottom of the newsletter!

Events

Events may be held in person, virtually, or in a hybrid format.

October 3-28 RI Archaeology Month. Join the RI Historic Preservation & Heritage Commission for "ArchTober" events highlighting Rhode Island's archeological heritage. All events are free and open to the public.

October 3 [How Autonomous Vehicles Make Our Roads Safer.](#) Learn how we are already beginning to see some of the benefits that driverless cars offer to road safety and the broader accessibility of transportation. Time: 1PM-2PM. Free.

October 5 [Assessment and Repair of a Trail After Catastrophic Damage.](#) Learn about the evaluation, planning, and action needed to restore a nationally-acclaimed trail due to heavy rains, landslides, and severe damage. Time: 1PM-2PM. Free.

October 5 [How National Week Without Driving is Shifting the Transportation Paradigm.](#) Join a panel of leaders about how we can start organizing locally and nationally to close the transportation gaps across our communities. Time: 2:30PM. Free.

October 5 [Measuring Accessibility: National Evaluation, Local Application.](#) MDOT shares their perspective on using the resulting data in state performance measurement and local planning, plus a discussion of what's next for Access Across America. Time: 2PM. Free.

October 5 & 6 [SNEAPA Conference 2023.](#) Location: Omni Hotel New Haven, 155 Temple Street, New Haven, CT. Fee: \$55-\$315. See article, above.

October 6 [Promoting Water Sustainability by Enabling Water-Neutral Development](#) Webinar will present strategies that have been proposed and implemented in two case studies and will provide access to free tools. Time: 1PM-2:30PM. Free. 1.5 CM.

October 10 [Actionable Steps for Equitable Vision Zero Planning.](#) Hear about approaches that practitioners can take to begin to operationalize health equity in Vision Zero planning, decision-making, investments, prioritization and accountability. Time: 1PM-2PM.

October 10 [Everybody Wins with Disability Inclusion.](#) Explore topics like disabilities, ableism, and inclusion. Participants will examine how ableism impacts their lives, work, and the world during this interactive training. Time: 9AM-12PM. Fee: \$50-\$200.

October 10 [Pop-Up Power: Research and Practice on Quick-Build Bike Facilities.](#) TRB webinar will explore state-of-the-practice in quick-build bicycle facility planning and design, safety outcomes, community engagement, and local politics. Time: 11AM-12:30PM. Fee: \$100. 1.5 CM.

October 12 [How To Host a Neighborhood Walk.](#) Going for a walk is a simple yet powerful way to get to know a neighborhood and neighbors, and to better understand assets and challenges. Time: 1PM. Fee: \$25. 1 CM.

October 12 [Lessons Learned: How We Adapt on the Road to Climate Adaptation.](#) Learn the limitations and challenges in a variety of climate change adaptation projects, and how they can inform next steps. Hybrid event. Time: 9AM-12PM. Fee: \$15-\$45.

October 13 [Transportation Planning in an Aging Society.](#) The way Baby Boomers travel is different from previous generations and understanding how does not keep pace with the increasing number of older people. Time: 2:30PM. Free. 1 CM.

October 18 [Stormwater Innovation Expo.](#) Discover the latest trends in stormwater management technology and professional services. Time: 8:30AM-3:30PM. Location: Roger William's Park, 1000 Elmwood Ave., Providence. Fee: \$0-\$35.

October 18 [Transportation Emissions and Health Equity: Research Perspectives.](#) The

Center for Advancing Research in Transportation Emissions, Energy, and Health (CARTEEH) member panel will share their research and perspectives on the nexus of emissions and health equity. Time: 11:30AM-1PM. Free.

October 18 [Accessory Dwelling Units: Removing Barriers and Encouraging Construction from the Ground Up](#) Webinar will provide an overview of ADU policies and examples from communities that are rewriting codes, overcoming political hurdles, and attracting new residents. Time: 12PM-1:15PM. Fee: \$15. 1.25 CM.

October 18 [Wired for the Future: Navigating the Path to Electrification](#). Time: 6PM-7:30PM. Learn about the transition towards an economy driven by renewable energy sources. Location: Robert J. Higgins Welcome Center, 45 Upper College Road, Kingston.

October 20 [There Are No Accidents: Racism, Poverty, and the Illusion of Human Error in America's Traffic "Accident" Epidemic](#) Lecture will explain racial and economic disparities in traffic fatalities, how deaths are fueled by policy/infrastructure, and the rationalizations that focus on human error, not systemic solutions. Time: 12PM. Free. 1 CM.

October 21 [RI Heritage Festival](#). Join this 45th annual celebration of our state's rich cultural heritage with culture, music, and dancing from around the world. Time: 12PM - 5PM. Location: WaterFire Arts Center, Valley Street, Providence. Free.

October 24 - November 9 [How to Create Successful Markets](#). Learn the essentials for creating a public market that is economically sustainable, maximizes community benefits, and creates inclusive public places in this multi-week virtual class. Time: 10AM-12PM. Fee: \$600.

October 24 [Pawtucket-Central Falls Transit Center tour](#). This WTS/ASCE tour will highlight the transportation hub which opened for service in January 2023. There will be a social gathering at a local restaurant/brewery! Time: 4PM-5:30PM. Free.

October 24-26 [Safe Routes to School Summit 2023: People, Places, and Possibility](#). Connect with Safe Routes practitioners, partners and champions. The Summit is open to anyone who has interest in SRTS! Fee: \$25-\$125.

October 25 [Inclusive Transportation: A Manifesto for Repairing Divided Communities](#). Hear what "equity" means for a transportation project and how it can create something safer, better, and more useful for all people. Time: 3PM-4PM. Free.

October 26 [Measuring Our Success in Diversity, Equity, and Inclusion](#). Webinar will help you discover innovative ways to talk about diversity and measure success through qualitative and quantitative data. Time: 1PM-2PM. Free.

October 26 [Turn That "Stroad" into a Street \(or Road\)](#). Picture a dangerous stroad, where you take your life in your hands just to cross. Now picture it transformed into a safe street for bikes, cars, and pedestrians. Learn how! Time: 1PM. Fee: \$25.

October 26 [Walktober Walkinar: Equity](#). Webinar will focus on equity, accessibility and the design decision-making that combines to have disparate impacts on quality of life and safety in many of our communities. Time: 10:30AM-12PM. Free.

Grants & Deadlines

October 2 [RI Statewide Planning Municipal Technical Assistance Programs](#)

[applications](#) are due by 4PM. Contact [Caitlin Greeley](#), Principal Planner, for more information.

October 5 [Distressed Area Recompete Pilot Program](#) will invest \$200 million in persistently distressed communities to create and connect people to good jobs.

October 9 [Community Change Grants](#) program supports advocates, organizations, and agencies working to advance walkability and opportunities for walking and movement at the community level.

October 10 [African American Civil Rights Grant Program](#) documents, interprets, and preserves sites and stories of the long struggle for African American civil rights from the transatlantic slave trade onwards through two separate grant funding opportunities.

October 10 [Pilot Program for Transit-Oriented Development Planning](#) provides FTA funding to communities to integrate land use and transportation planning in new fixed guideway and core capacity transit project corridors.

October 10 [Strengthening Mobility and Revolutionizing Transportation \(SMART\)](#) grant program provides grants to conduct demonstration projects focused on smart community technologies/systems to improve transportation efficiency and safety.

October 12 [HOPE VI Main Street Program](#) provides grants to small communities to assist in the renovation of “Main Street” areas by replacing unused, obsolete, commercial space in buildings with affordable housing units.

October 12 [NACWA Small Grants Program](#) supports public-private partnerships for long-term protection, restoration, enhancement and/or establishment of wetland and associated upland habitats to benefit migratory birds.

October 15 [RIDOT Municipal Road & Bridge Program](#) provides funding to municipalities for the construction and maintenance of roads, sidewalks, and bridges.

October 26 [Energy Improvement in Rural or Remote Areas \(ERA\) Grant Program](#) supports small community-driven clean energy projects.

October 27 [Municipal Resilience Program \(MRP\) Action Grants](#) provide financial assistance for municipalities who have received designation as a Resilient Rhody MRP municipality to implement priority adaptation actions.

October 27 [RIDEM Open Space Grant program](#) provides up to fifty percent matching funds to municipalities, land trusts, and non-profit conservation land organizations to preserve open space throughout the state.

October 30 [Pathways to Removing Obstacles to Housing \(PRO Housing\)](#) supports communities to remove barriers to affordable housing, such as outdated zoning, land use policies, or regulations or gaps in available resources for development.

October 31 [Community Wildfire Defense Grant](#) assists communities and tribes with planning for/mitigating the risk created by wildfire, prioritizing at-risk communities with high/very high wildfire potential, are low-income, and/or have been impacted by a severe disaster.

October 31 [Conservation Innovation Grants \(CIG\) program](#) from the USDA for new tools, approaches, practices and technologies to further natural resource conservation on private lands.

Articles of Interest

[AI is coming to our neighborhoods](#)

[Will a crematorium proposal in Tiverton go to court?](#)

[Obstacles in plan to expand CT rail service to RI, report finds](#)

[Historic preservation boosts economies in RI and around the world](#)

[Another RI community looks to limit short-term rentals](#)

[Three-community roadway transformation project complete](#)

Contact Us

Click [here](#) for staff contact information.

Photo Trivia Answer

EAST PROVIDENCE

[Ponham Rocks lighthouse \(1871\)](#)

Photo: iStockphoto.com

RI Division of Statewide Planning | 235 Promenade Street, Suite 230, Providence, RI 02908
www.planning.ri.gov

[Unsubscribe](mailto:doa.planning@doa.ri.gov) doa.planning@doa.ri.gov

[Update Profile](#) | [Constant Contact Data Notice](#)

Sent by doa.planning@doa.ri.gov powered by



Try email marketing for free today!